

Elettropompe con motore flangiato per liquidi carichi in camera asciutta  
*Dry installed sewage electric pumps with flanged motor*  
*Electropompes pour eaux chargées en fosse sèche*

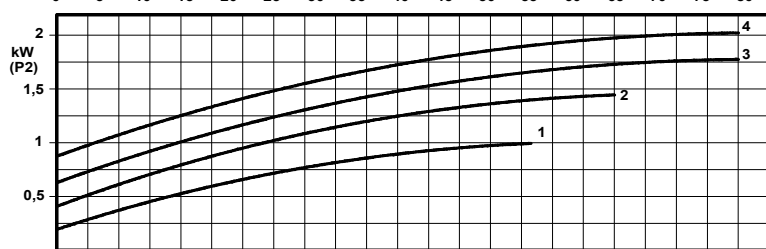
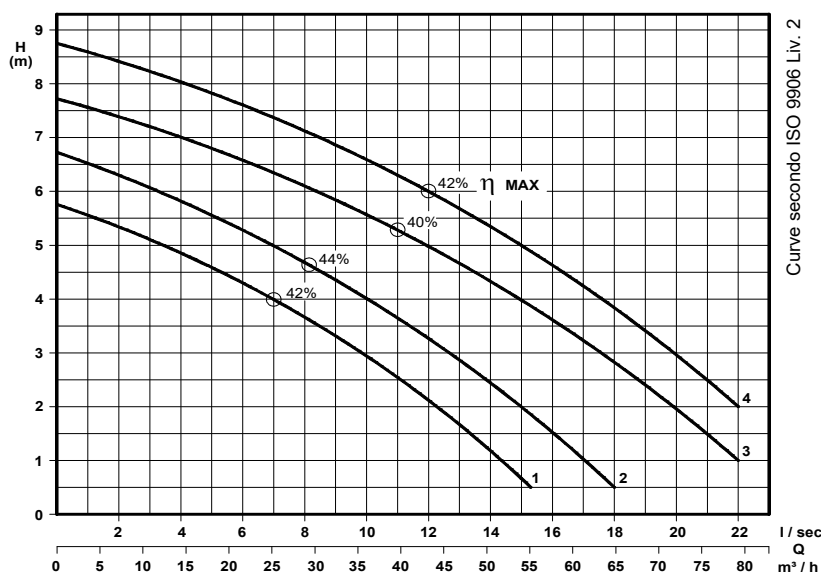


N°	CURVA - Curve - Courbe	POMPA Pump Pompe	DN		POTENZA MOTORE Motor rating Puissance moteur	PESO Weight Poids
			GIRI /Min - RPM - Tours/min.			
1	KSM 65/6-200B A2 L2		65	960	1,5	75
2	KSM 65/6-219B A2 L2				2,2	83
3	KSM 65/6-210F A3 L2					
4	KSM 65/6-219F A3 L2					

**GIRANTE ARRETRATA A VORTICE**  
*Vortex impeller*  
*Roue Vortex*



**PASSAGGIO LIBERO**  
*Free passage*  
*Sèction de passage*  
**60 mm B**  
**45 mm F**



P2 - Potenza resa - Shaft power - Puissance sur arbre

#### COSTRUZIONE - Materials - Matériaux

Fusioni principali - <i>Principal parts</i> - <i>Parts principal</i>	Ghisa - Cast iron - Fonte - GG 25
Girante - <i>Impeller</i> - <i>Roue</i>	Ghisa - Cast iron - Fonte - GG 25
Albero - <i>Shaft</i> - <i>Arbre</i>	AISI 420
Viteria - <i>Screws</i> - <i>Vis</i>	AISI 304

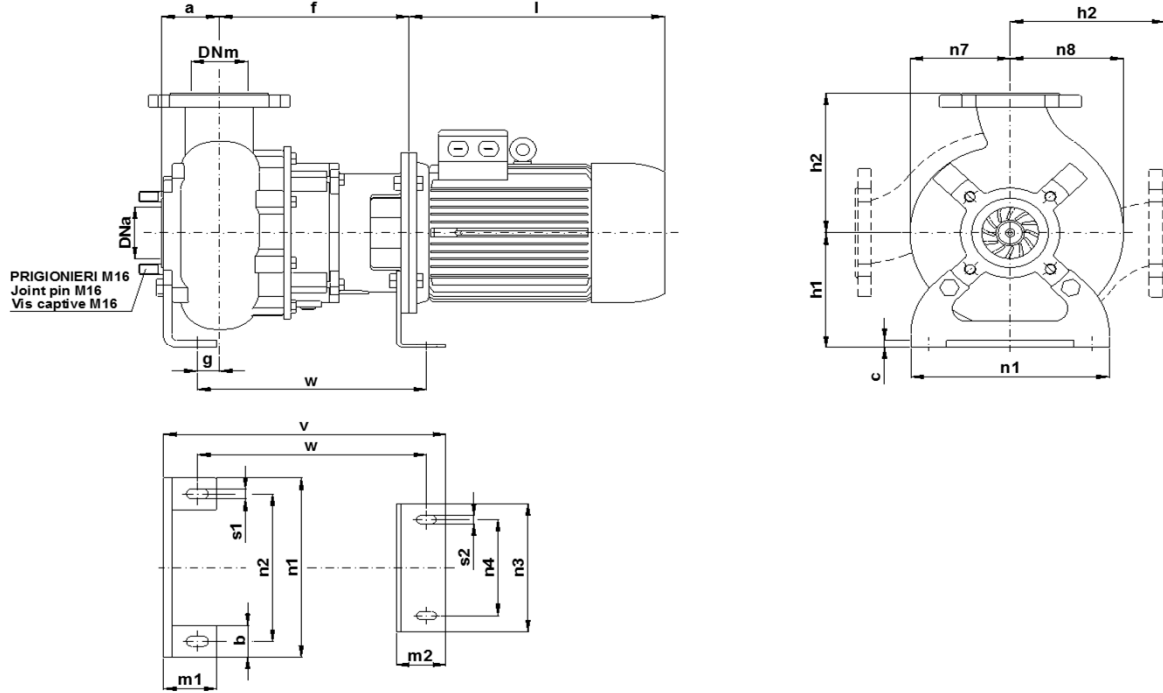
#### TENUTE MECCANICHE - Mechanical seals - Garniture mécanique

Doppia tenuta meccanica in bagno d'olio - *Double mechanical seals in oil bath* - *Double garniture mécanique en chambre d'huile*  
 Tenuta lato motore / tenuta lato liquido : carburo di silicio  
*Motor side / liquid side mechanical seal : silicon carbide*  
*Garniture mécanique côté du moteur / côté liquide : carbure de silicium*

#### CARATTERISTICHE TECNICHE - Technical Features - Caractéristiques Techniques

Motore - *Motor* - *Moteur* : B5 IP55  
 Classe isolamento - *Insulating class* - *Isolement classe* : F  
 Max. temperatura liquido - *Max liquid temp.* - *Max Temperature du liquide*: 60°C  
 pH Liquido da pompare - *pH pumped liquid* - *pH du liquide pompé* : 6 - 10

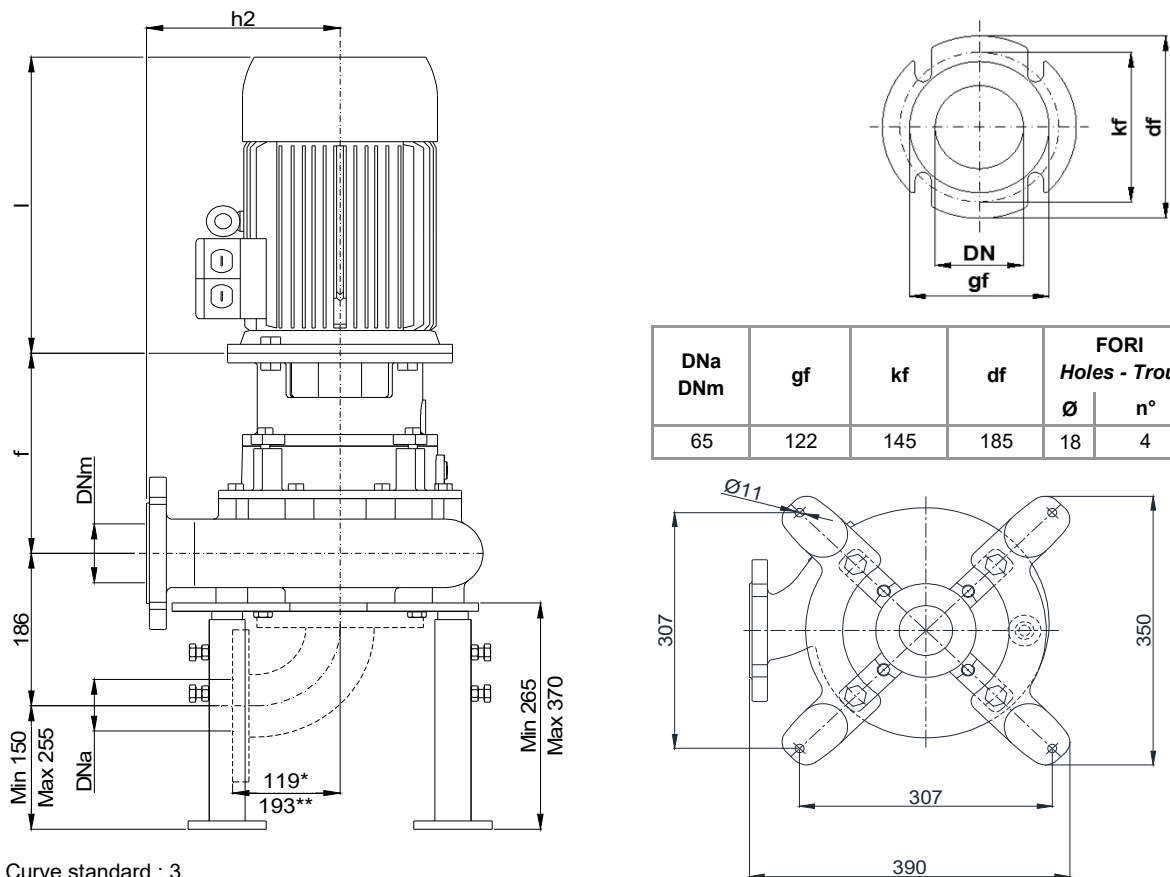
INSTALLAZIONE ORIZZONTALE - *Horizontal installation - Installation Horizontale*



POMPA Pumps Pompe	DNa DNm	Gr. Motore Motor size Taille du moteur	a	b	c	f	g	h1	h2	l	m1	m2	n1	n2	n3	n4	n7	n8	s1	s2	v	w
KSM 65 - ....	65	100 (kW 1,5)	70	50	12	243	26	180	215	325	75	70	280	230	200	150	140	160	16	13	368	293
		345																				

Dimensioni - Size - Dimensions in mm.

INSTALLAZIONE VERTICALE - *Vertical installation - Installation verticale*



DNa DNm	gf	kf	df	FORI Holes - Trou	
				Ø	n°
65	122	145	185	18	4

\* Curva dima - Curve standard : 3

\*\* Curva dima - Curve standard: 5

KSM 65/6-220-1-17X.0

Con riserva di variazioni tecniche e costruttive senza preavviso.

With reserve of technical and constructive variations without warning. - Avec réserve de variations techniques et constructives sans préavis.

**POMPE ROTOMECH srl** - 20063 CERNUSCO SUL NAVIGLIO (MI) - ITALY - Via Ponchielli, 1

Tel.02 9211.0205 - 02 9233.0399 Fax 02 9211.0630 Sito Internet: www.pomperotomec.it E-mail: sales@pomperotomec.it

Elettropompe con motore flangiato per liquidi carichi in camera asciutta  
*Dry installed sewage electric pumps with flanged motor*  
*Electropompes pour eaux chargées en fosse sèche*

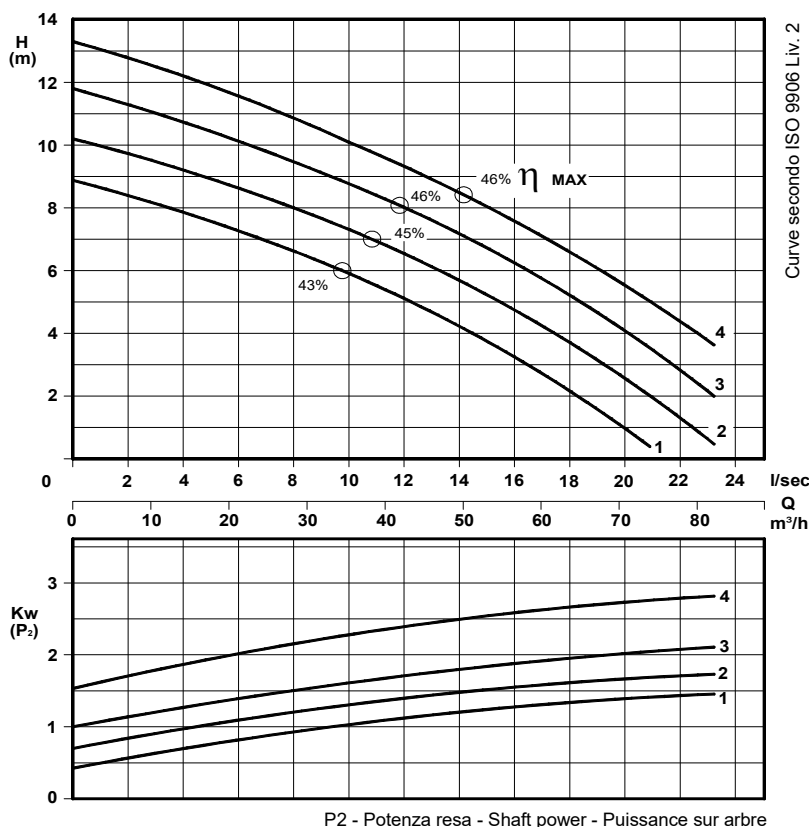


CURVA - Curve - Courbe		POMPA Pump Pompe	DN	GIRI /Min - RPM - Tours/min.	POTENZA MOTORE Motor rating Puissance moteur	PESO Weight Poids
N°					kW	Kg
1	KSM 65-170B A1 L1		65	1450	1,5	75
2	KSM 65-180B A2 L2				2,2	83
3	KSM 65-200B A2 L2				3	87
4	KSM 65-219B A2 L2					

**GIRANTE ARRETRATA A VORTICE**  
*Vortex impeller*  
*Roue Vortex*



**PASSAGGIO LIBERO**  
*Free passage*  
*Séction de passage*  
**60 mm**



#### COSTRUZIONE - Materials - Matériaux

Fusioni principali - <i>Principal parts</i> - <i>Parts principal</i>	Ghisa - <i>Cast iron</i> - <i>Fonte</i> - GG 25
Girante - <i>Impeller</i> - <i>Roue</i>	Ghisa - <i>Cast iron</i> - <i>Fonte</i> - GG 25
Albero - <i>Shaft</i> - <i>Arbre</i>	AISI 420
Viteria - <i>Screws</i> - <i>Vis</i>	AISI 304

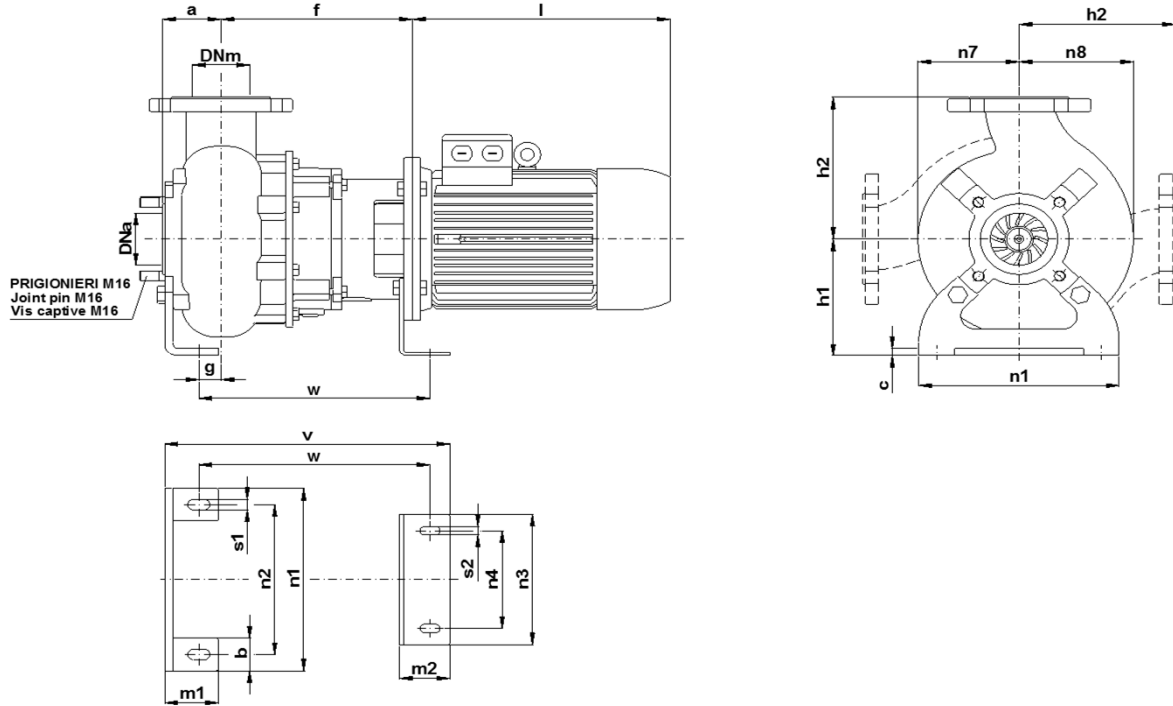
#### TENUTE MECCANICHE - Mechanical seals - Garniture mécanique

Doppia tenuta meccanica in bagno d'olio - *Double mechanical seals in oil bath* - *Double garniture mécanique en chambre d'huile*  
 Tenuta lato motore / tenuta lato liquido : carburo di silicio  
*Motor side / liquid side mechanical seal : silicon carbide*  
*Garniture mécanique côté du moteur / côté liquide : carbure de silicium*

#### CARATTERISTICHE TECNICHE - Technical Features - Caractéristiques Techniques

Motore - *Motor* - *Moteur* : B5 IP55  
 Classe isolamento - *Insulating class* - *Isolement classe* : F  
 Max. temperatura liquido - *Max liquid temp.* - *Max Temperature du liquide*: 60°C  
 pH Liquido pompato - *pH pumped liquid* - *pH du liquide pompé*: 6 - 10

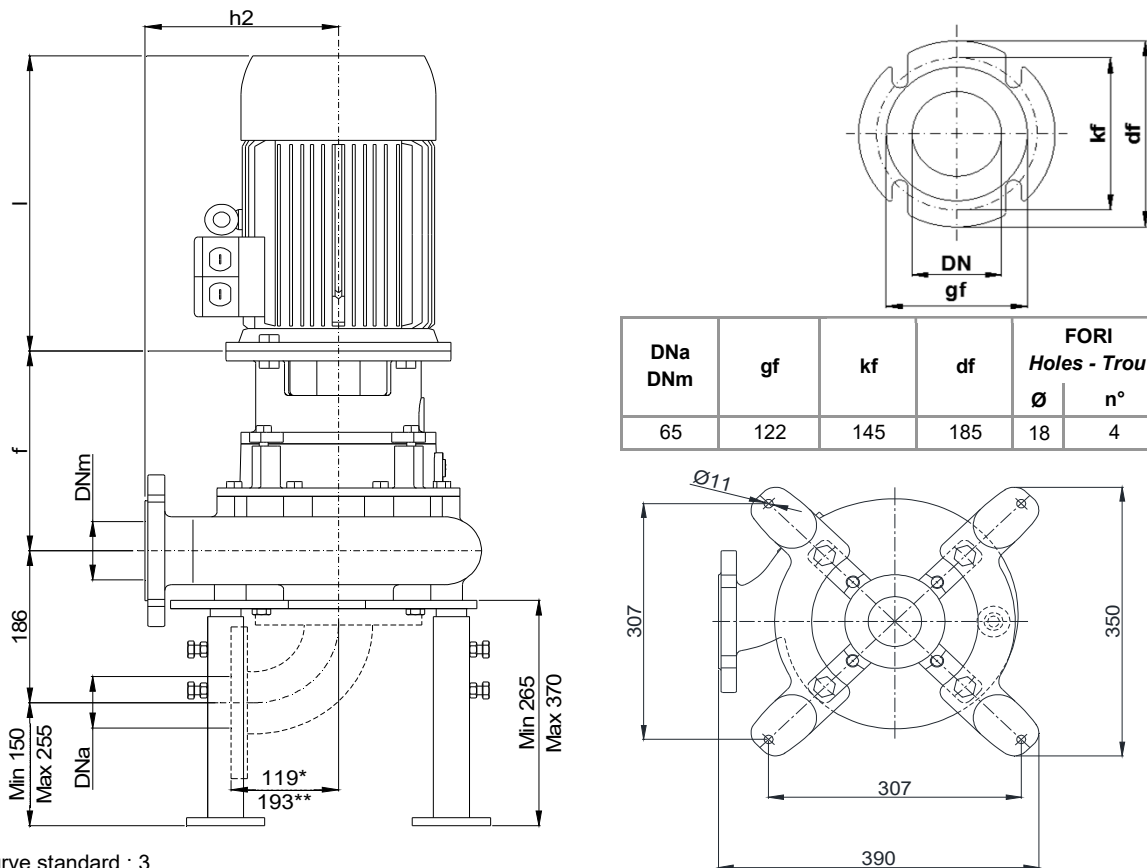
INSTALLAZIONE ORIZZONTALE - *Horizontal installation - Installation Horizontale*



POMPA Pumps Pompe	DNa DNm	Gr. Motore Motor size Taille du moteur	a	b	c	f	g	h1	h2	l	m1	m2	n1	n2	n3	n4	n7	n8	s1	s2	v	w
KSM 65 - ....	65	90 (kW 1,5)	70	50	12	243	26	180	215	285	75	70	280	230	180	140	140	160	16	13	353	278
		325								200					150	368						293

Dimensioni - Size - Dimensions in mm.

INSTALLAZIONE VERTICALE - *Vertical installation - Installation verticale*



DNa DNm	gf	kf	df	FORI Holes - Trou	
				Ø	n°
65	122	145	185	18	4

\* Curva dima - Curve standard : 3

\*\* Curva dima - Curve standard: 5

KSM 65/4-220-1-17X.0

Con riserva di variazioni tecniche e costruttive senza preavviso.

With reserve of technical and constructive variations without warning. - Avec réserve de variations techniques et constructives sans préavis.

**POMPE ROTOMECH srl** - 20063 CERNUSCO SUL NAVIGLIO (MI) - ITALY - Via Ponchielli, 1

Tel.02 9211.0205 - 02 9233.0399 Fax 02 9211.0630 Sito Internet: www.pomperotomec.it E-mail: sales@pomperotomec.it



# POMPE ROTOMEC

## KSM 65/4-220.2

### DN 65

### 1450 rpm

Elettropompe con motore flangiato per liquidi carichi in camera asciutta  
 Dry installed sewage electric pumps with flanged motor  
 Electropompes pour eaux chargées en fosse sèche

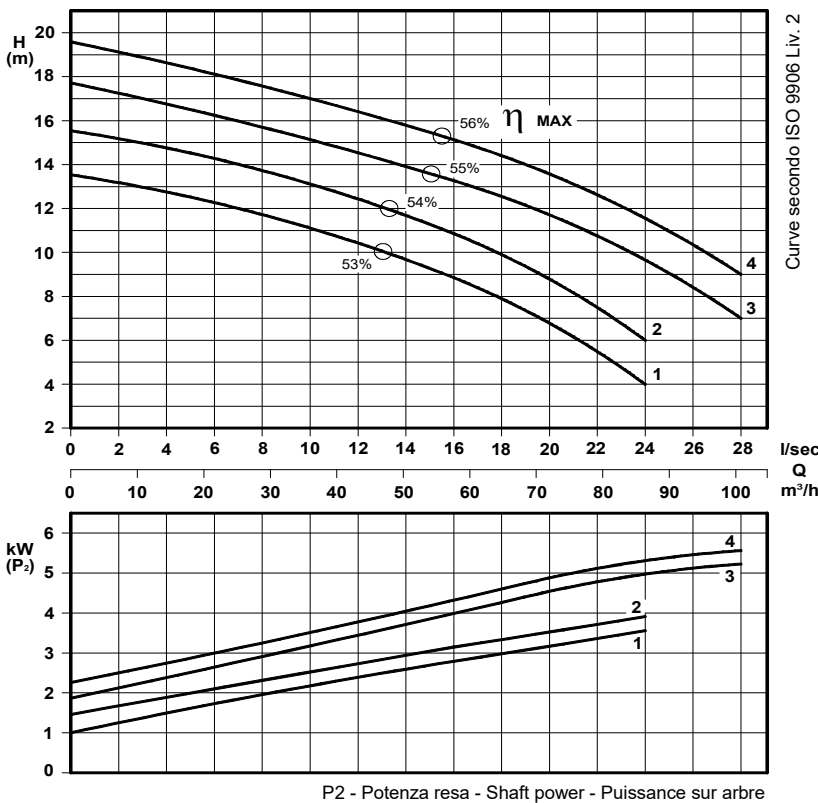


N°	CURVA - Curve - Courbe	POMPA Pump Pompe	DN	GIRI /Min - RPM. - Tours/min.	POTENZA MOTORE Motor rating Puissance moteur	PESO Weight Poids
1	KSM 65-210C A2 L2		65	1450		
2	KSM 65-219C A2 L2					
3	KSM 65-210F A5 L3					
4	KSM 65-219F A5 L3					

GIRANTE ARRETRATA A VORTICE  
 Vortex impeller  
 Roue Vortex



PASSAGGIO LIBERO  
 Free passage  
 Section de passage  
 55 mm C  
 45 mm F



### COSTRUZIONE - Materials - Matériaux

Fusioni principali - Principal parts - Parts principal	Ghisa - Cast iron - Fonte - GG 25
Girante - Impeller - Roue	Ghisa - Cast iron - Fonte - GG 25
Albero - Shaft - Arbre	AISI 420
Viteria - Screws - Vis	AISI 304

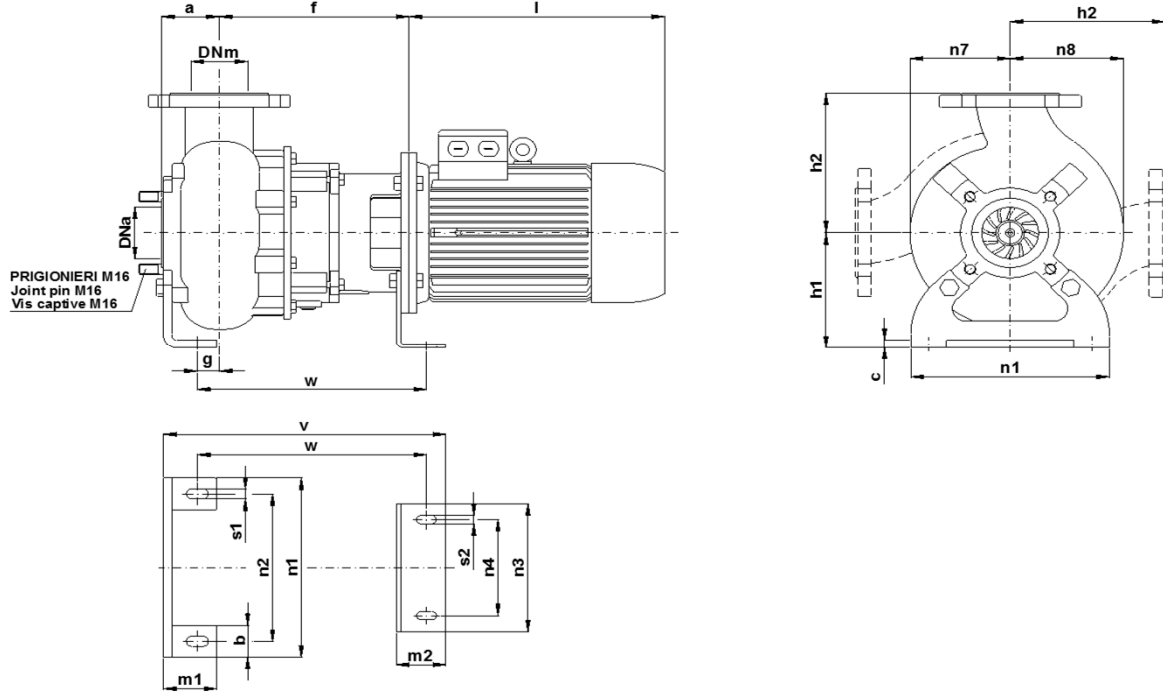
### TENUTE MECCANICHE - Mechanical seals - Garniture mécanique

Doppia tenuta meccanica in bagno d'olio - Double mechanical seals in oil bath - Double garniture mécanique en chambre d'huile  
 Tenuta lato motore / tenuta lato liquido : carburo di silicio  
 Motor side / liquid side mechanical seal : silicon carbide  
 Garniture mécanique côté du moteur / côté liquide : carbure de silicium

### CARATTERISTICHE TECNICHE - Technical Features - Caractéristiques Techniques

Motore - Motor - Moteur : B5 IP55	Classe isolamento - Insulating class - Isolement classe : F
Max. temperatura liquido - Max liquid temp. - Max Temperature du liquide: 60°C	
pH Liquido pompato - pH pumped liquid - pH du liquide pompé: 6 - 10	

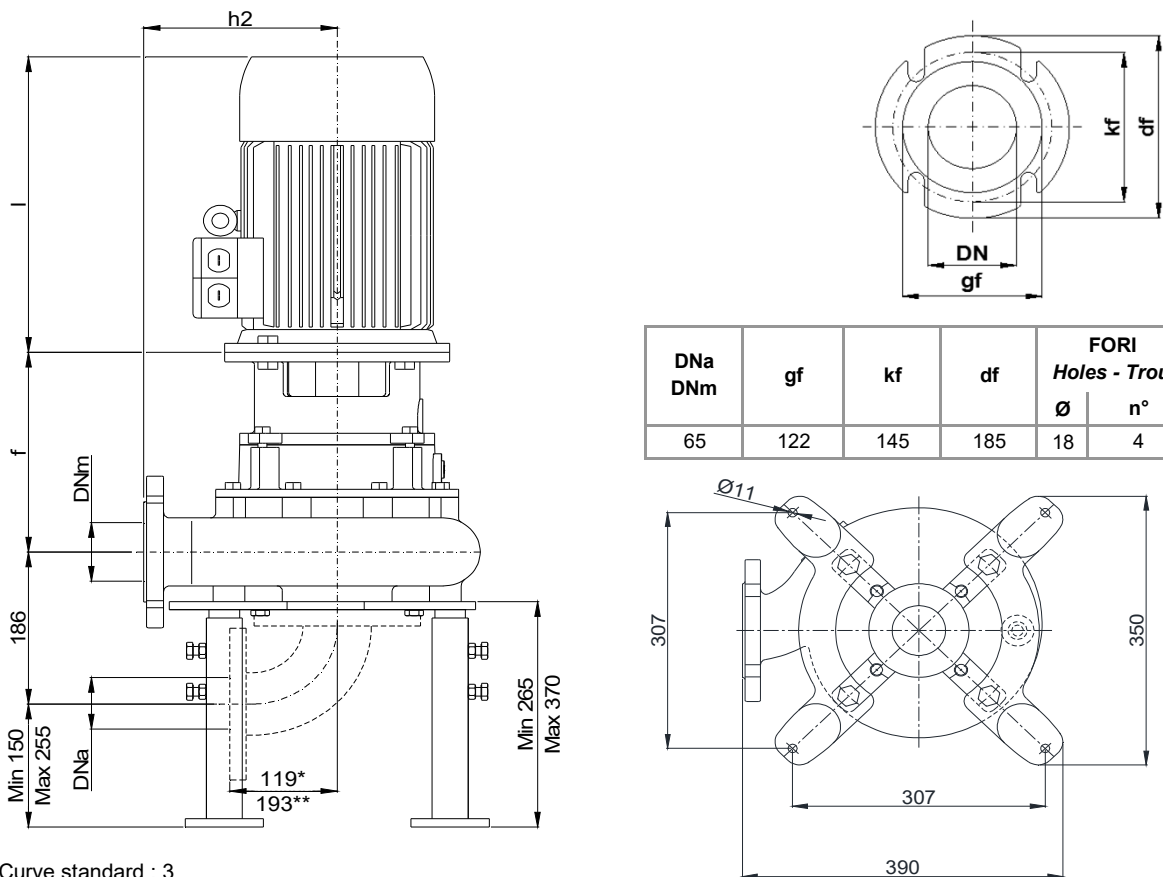
**INSTALLAZIONE ORIZZONTALE - *Horizontal installation - Installation Horizontale***



POMPA Pumps Pompe	DNa DNm	Gr. Motore Motor size Taille du moteur	a	b	c	f	g	h1	h2	l	m1	m2	n1	n2	n3	n4	n7	n8	s1	s2	v	w
KSM 65 - ....	65	112 (kW 4)	70	50	12	243	26	180	215	345	75	70	280	230	200	150	140	160	16	13	368	293
		271				435				398												323

Dimensioni - Size - Dimensions in mm.

**INSTALLAZIONE VERTICALE - *Vertical installation - Installation verticale***



\* Curva dima - Curve standard : 3

\*\* Curva dima - Curve standard: 5

KSM 65/4-220-2-17X.0

Con riserva di variazioni tecniche e costruttive senza preavviso.

With reserve of technical and constructive variations without warning. - Avec réserve de variations techniques et constructives sans préavis.

**POMPE ROTOMECH srl** - 20063 CERNUSCO SUL NAVIGLIO (MI) - ITALY - Via Ponchielli, 1

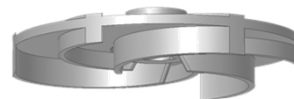
Tel.02 9211.0205 - 02 9233.0399 Fax 02 9211.0630 Sito Internet: www.pomperotomec.it E-mail: sales@pomperotomec.it

**Elettropompe con motore flangiato per liquidi carichi in camera asciutta**  
**Dry installed sewage electric pumps with flanged motor**  
**Electropompes pour eaux chargées en fosse sèche**

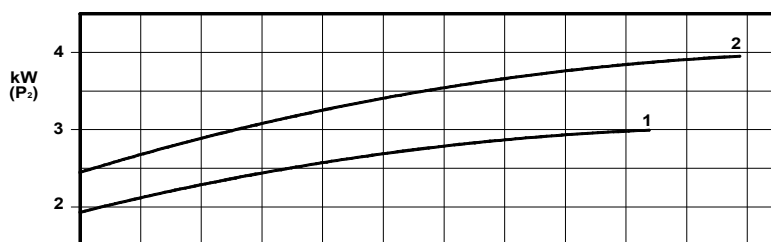
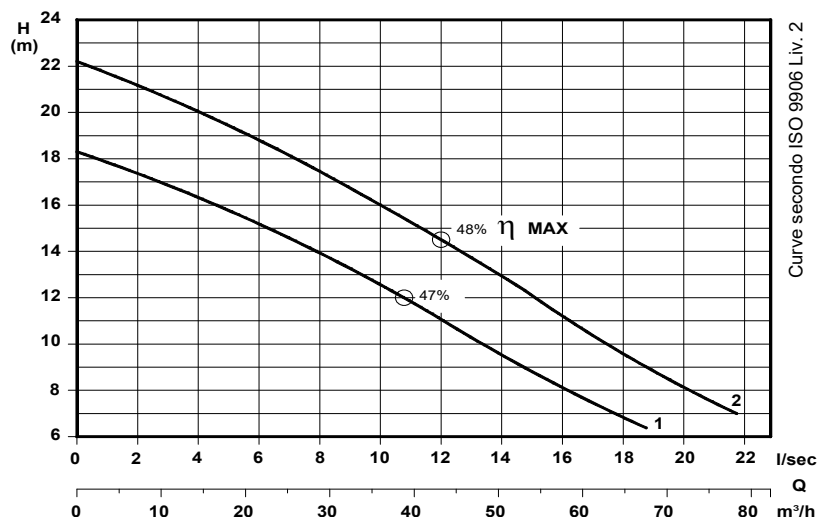


CURVA - Curve - Courbe		POMPA Pump Pompe		DN	GIRI /Min - RPM - Tours/min.	POTENZA MOTORE Motor rating Puissance moteur	PESO Weight Poids
N°						kW	Kg
1	KSM 65/2-137K1 A2 L2	65	2900			3	88
2	KSM 65/2-150K1 A2 L2					4	98

**GIRANTE ARRETRATA A VORTICE**  
**Vortex impeller**  
**Roue Vortex**



**PASSAGGIO LIBERO**  
**Free passage**  
**Séction de passage**  
**50 mm**



P2 - Potenza resa - Shaft power - Puissance sur arbre

#### COSTRUZIONE - Materials - Matériaux

Fusioni principali - Principal parts - Parts principal	Ghisa - Cast iron - Fonte - GG 25
Girante - Impeller - Roue	Ghisa - Cast iron - Fonte - GG 25
Albero - Shaft - Arbre	AISI 420
Viteria - Screws - Vis	AISI 304

#### TENUTE MECCANICHE - Mechanical seals - Garniture mécanique

Doppia tenuta meccanica in bagno d'olio - Double mechanical seals in oil bath - Double garniture mécanique en chambre d'huile

Tenuta lato motore / tenuta lato liquido : carburo di silicio

Motor side / liquid side mechanical seal : silicon carbide

Garniture mécanique côté du moteur / côté liquide : carbure de silicium

#### CARATTERISTICHE TECNICHE - Technical Features - Caractéristiques Techniques

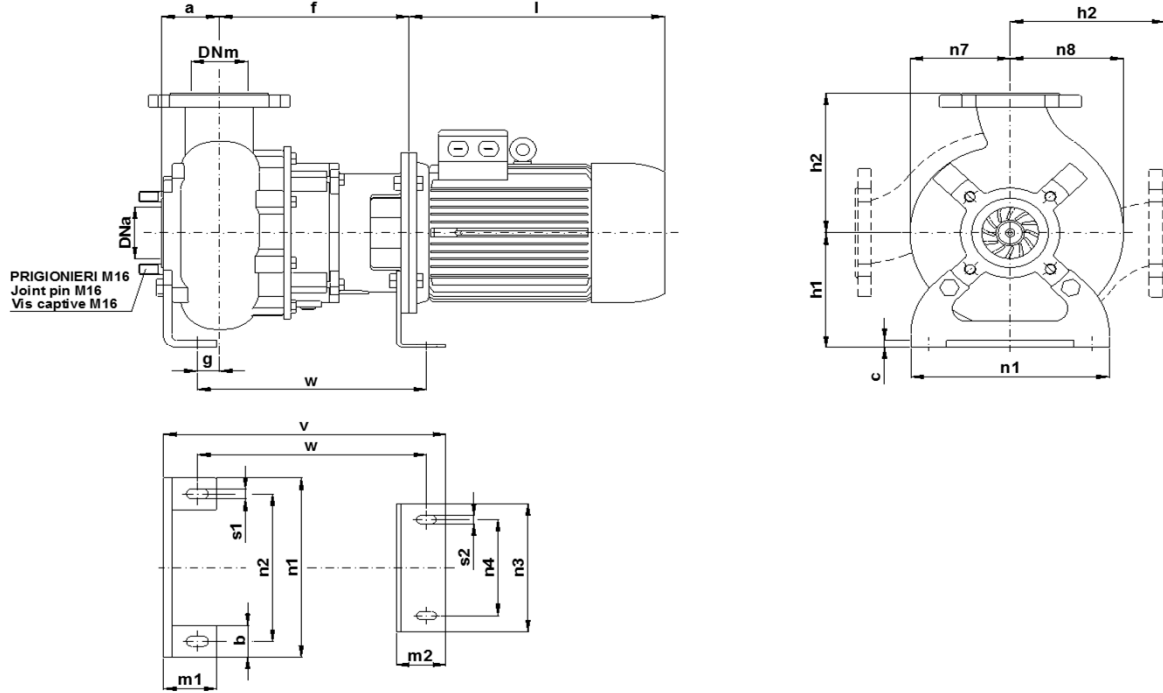
Motore - Motor - Moteur : B5 IP55

Classe isolamento - Insulating class - Isolement classe : F

Max. temperatura liquido - Max liquid temp. - Max Temperature du liquide: 60°C

pH Liquido pompato - pH pumped liquid - pH du liquide pompé: 6 - 10

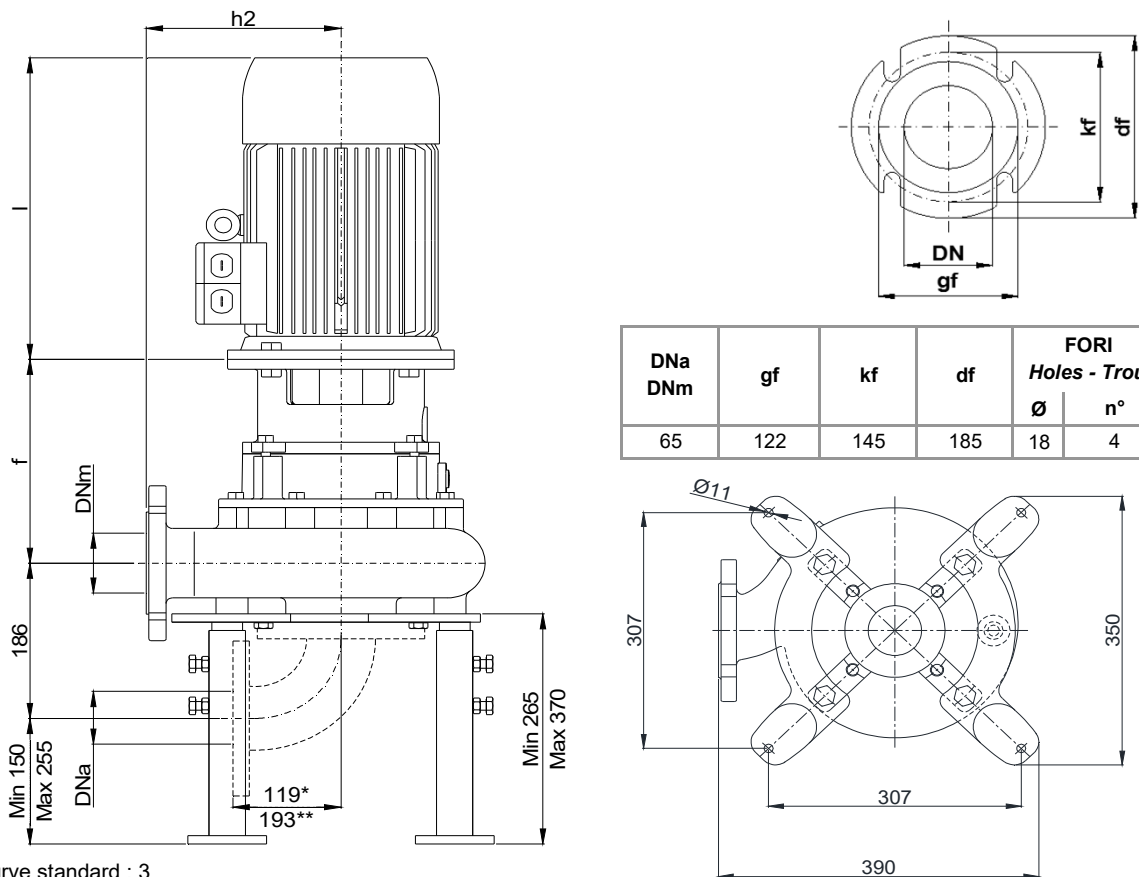
**INSTALLAZIONE ORIZZONTALE - *Horizontal installation - Installation Horizontale***



POMPA Pumps Pompe	DNa DNm	Gr. Motore Motor size Taille du moteur	a	b	c	f	g	h1	h2	l	m1	m2	n1	n2	n3	n4	n7	n8	s1	s2	v	w
KSM 65 - ....	65	100	70	50	12	243	26	180	215	325	75	70	280	230	200	150	140	160	16	13	368	293
		345																				

Dimensioni - Size - Dimensions in mm.

**INSTALLAZIONE VERTICALE - *Vertical installation - Installation verticale***



DNa DNm	gf	kf	df	FORI Holes - Trou	
				Ø	n°
65	122	145	185	18	4

\* Curva dima - Curve standard : 3

\*\* Curva dima - Curve standard: 5

KSM 65/2-220-1-17X.0

Con riserva di variazioni tecniche e costruttive senza preavviso.

With reserve of technical and constructive variations without warning. - Avec réserve de variations techniques et constructives sans préavis.

**POMPE ROTOMEK srl** - 20063 CERNUSCO SUL NAVIGLIO (MI) - ITALY - Via Ponchielli, 1

Tel.02 9211.0205 - 02 9233.0399 Fax 02 9211.0630 Sito Internet: www.pomperotomec.it E-mail: sales@pomperotomec.it





# POMPE ROTOMEC

## KSM 65/2-220.2

### DN 65

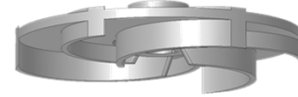
### 2900 rpm

Elettropompe con motore flangiato per liquidi carichi in camera asciutta  
 Dry installed sewage electric pumps with flanged motor  
 Electropompes pour eaux chargées en fosse sèche

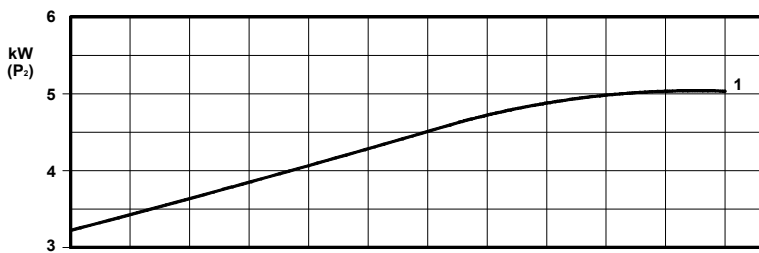
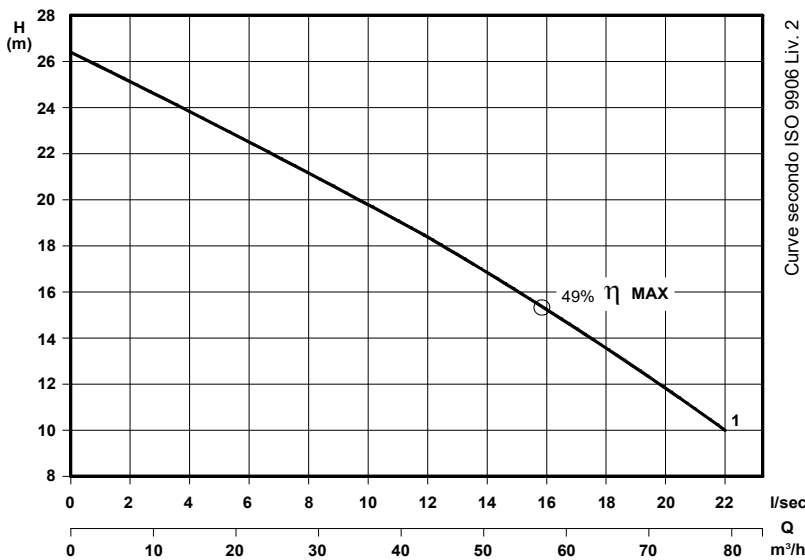


CURVA - Curve - Courbe		POMPA Pump Pompe		DN	GIRI /Min - RPM - Tours/min.	POTENZA MOTORE Motor rating Puissance moteur	PESO Weight Poids
N°						kW	Kg
1	KSM 65/2-165K2 A10 L3	65	2900		5,5	100	

GIRANTE ARRETRATA A VORTICE  
 Vortex impeller  
 Roue Vortex



PASSAGGIO LIBERO  
 Free passage  
 Section de passage  
 45 mm



P2 - Potenza resa - Shaft power - Puissance sur arbre

#### COSTRUZIONE - Materials - Matériaux

Fusioni principali - Principal parts - Parts principal	Ghisa - Cast iron - Fonte - GG 25
Girante - Impeller - Roue	Ghisa - Cast iron - Fonte - GG 25
Albero - Shaft - Arbre	AISI 420
Viteria - Screws - Vis	AISI 304

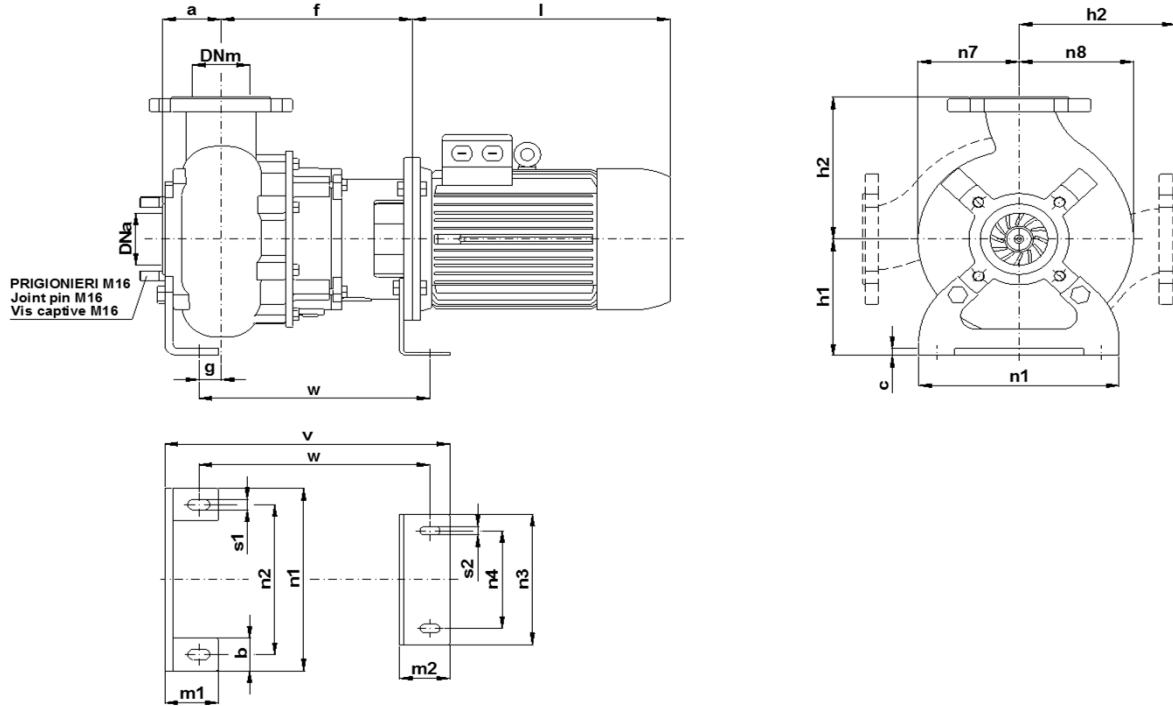
#### TENUTE MECCANICHE - Mechanical seals - Garniture mécanique

Doppia tenuta meccanica in bagno d'olio - Double mechanical seals in oil bath - Double garniture mécanique en chambre d'huile  
 Tenuta lato motore / tenuta lato liquido : carburo di silicio  
 Motor side / liquid side mechanical seal : silicon carbide  
 Garniture mécanique côté du moteur / côté liquide : carbure de silicium

#### CARATTERISTICHE TECNICHE - Technical Features - Caractéristiques Techniques

Motore - Motor - Moteur : B5 IP55  
 Classe isolamento - Insulating class - Isolement classe : F  
 Max. temperatura liquido - Max liquid temp. - Max Temperature du liquide: 60°C  
 pH Liquido pompato - pH pumped liquid - pH du liquide pompé : 6 - 10

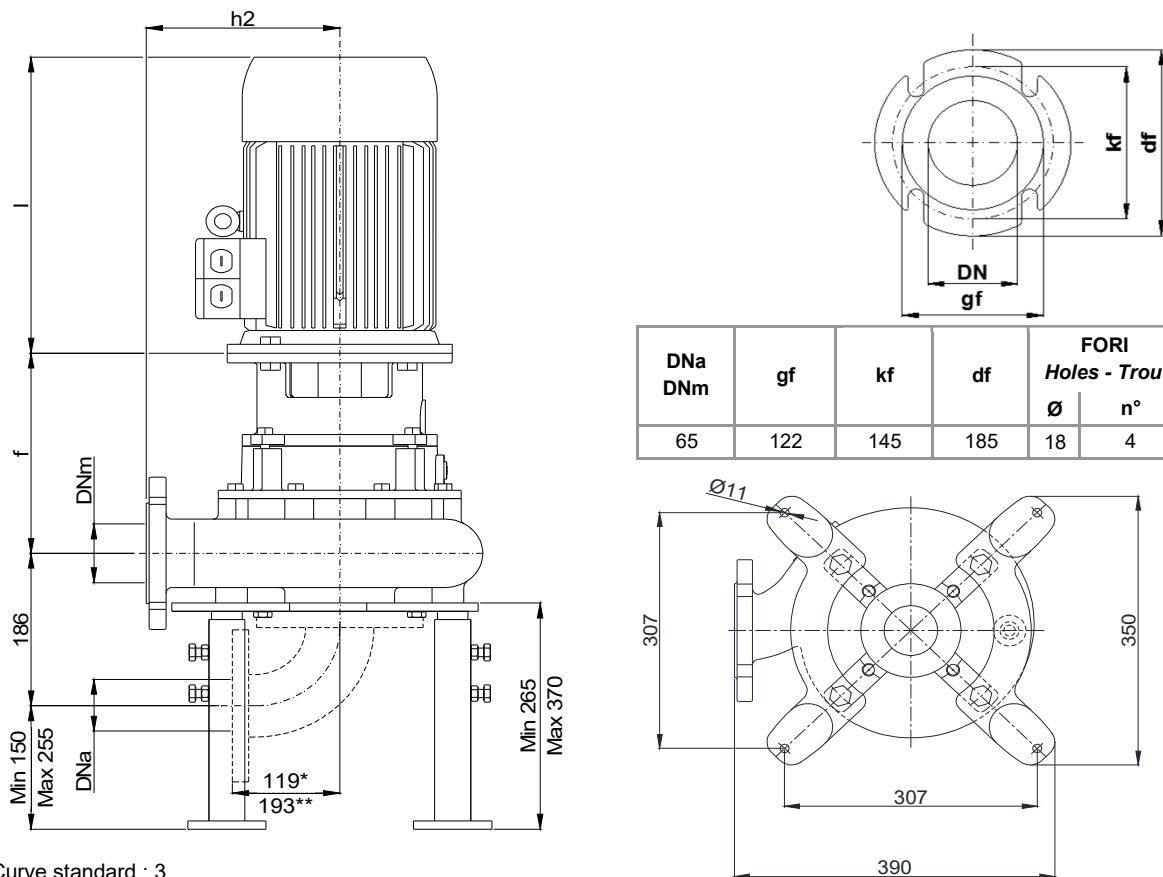
INSTALLAZIONE ORIZZONTALE - *Horizontal installation - Installation Horizontale*



POMPA Pumps Pompe	DNa DNm	Gr. Motore Motor size Taille du moteur	a	b	c	f	g	h1	h2	l	m1	m2	n1	n2	n3	n4	n7	n8	s1	s2	v	w
KSM 65 - ....	65	132	70	50	12	297	26	180	215	345	75	70	300	250	280	180	140	160	16	13	452	360

Dimensioni - Size - Dimensions in mm.

INSTALLAZIONE VERTICALE - *Vertical installation - Installation verticale*



DNa DNm	gf	kf	df	FORI Holes - Trou	
				Ø	n°
65	122	145	185	18	4

\* Curva dima - Curve standard : 3

\*\* Curva dima - Curve standard: 5

KSM 65/2-220-1-17X.0

Con riserva di variazioni tecniche e costruttive senza preavviso.

With reserve of technical and constructive variations without warning. - Avec réserve de variations techniques et constructives sans préavis.

**POMPE ROTOMECH srl** - 20063 CERNUSCO SUL NAVIGLIO (MI) - ITALY - Via Ponchielli, 1

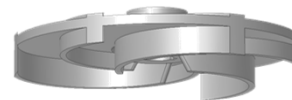
Tel.02 9211.0205 - 02 9233.0399 Fax 02 9211.0630 Sito Internet: www.pomperotomec.it E-mail: sales@pomperotomec.it

Elettropompe con motore flangiato per liquidi carichi in camera asciutta  
*Dry installed sewage electric pumps with flanged motor*  
*Electropompes pour eaux chargées en fosse sèche*

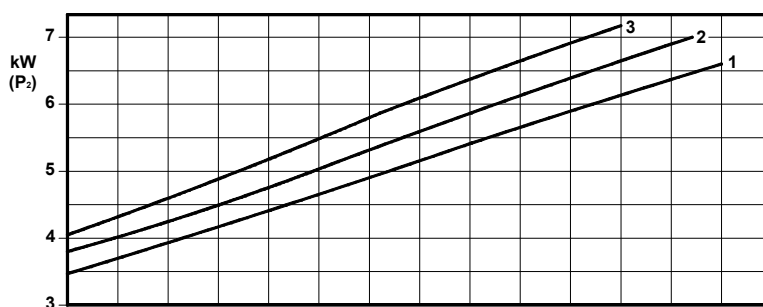
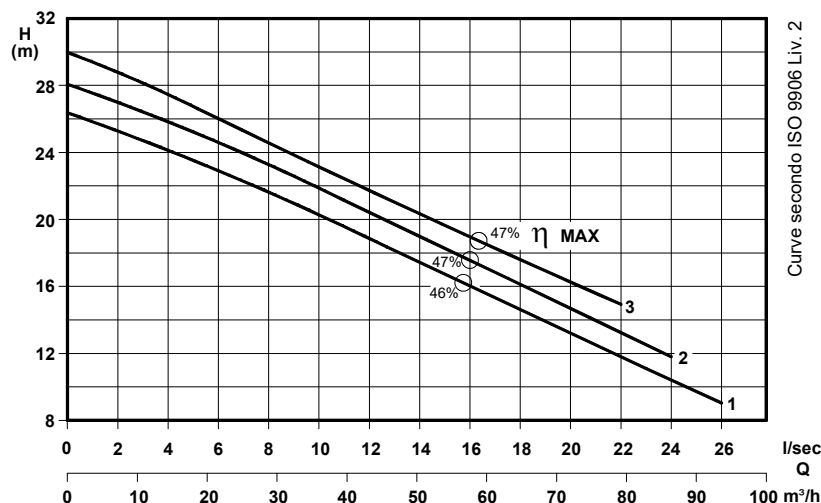


CURVA - Curve - Courbe		POMPA Pump Pompe		DN	GIRI /Min - RPM - Tours/min.	POTENZA MOTORE Motor rating Puissance moteur	PESO Weight Poids
N°						kW	Kg
1	KSM 65/2-165K3 A5 L3	65	2900	7,5	130		
2	KSM 65/2-170K3 A5 L3						
3	KSM 65/2-175K3 A5 L3						

**GIRANTE ARRETRATA A VORTICE**  
*Vortex impeller*  
*Roue Vortex*



**PASSAGGIO LIBERO**  
*Free passage*  
*Sèction de passage*  
**50 mm**



P2 - Potenza resa - Shaft power - Puissance sur arbre

#### COSTRUZIONE - Materials - Matériaux

Fusioni principali - <i>Principal parts</i> - <i>Parts principal</i>	Ghisa - <i>Cast iron</i> - <i>Fonte</i> - GG 25
Girante - <i>Impeller</i> - <i>Roue</i>	Ghisa - <i>Cast iron</i> - <i>Fonte</i> - GG 25
Albero - <i>Shaft</i> - <i>Arbre</i>	AISI 420
Viteria - <i>Screws</i> - <i>Vis</i>	AISI 304

#### TENUTE MECCANICHE - Mechanical seals - Garniture mécanique

Doppia tenuta meccanica in bagno d'olio - *Double mechanical seals in oil bath* - *Double garniture mécanique en chambre d'huile*

Tenuta lato motore / tenuta lato liquido : carburo di silicio

*Motor side / liquid side mechanical seal : silicon carbide*

*Garniture mécanique côté du moteur / côté liquide : carbure de silicium*

#### CARATTERISTICHE TECNICHE - Technical Features - Caractéristiques Techniques

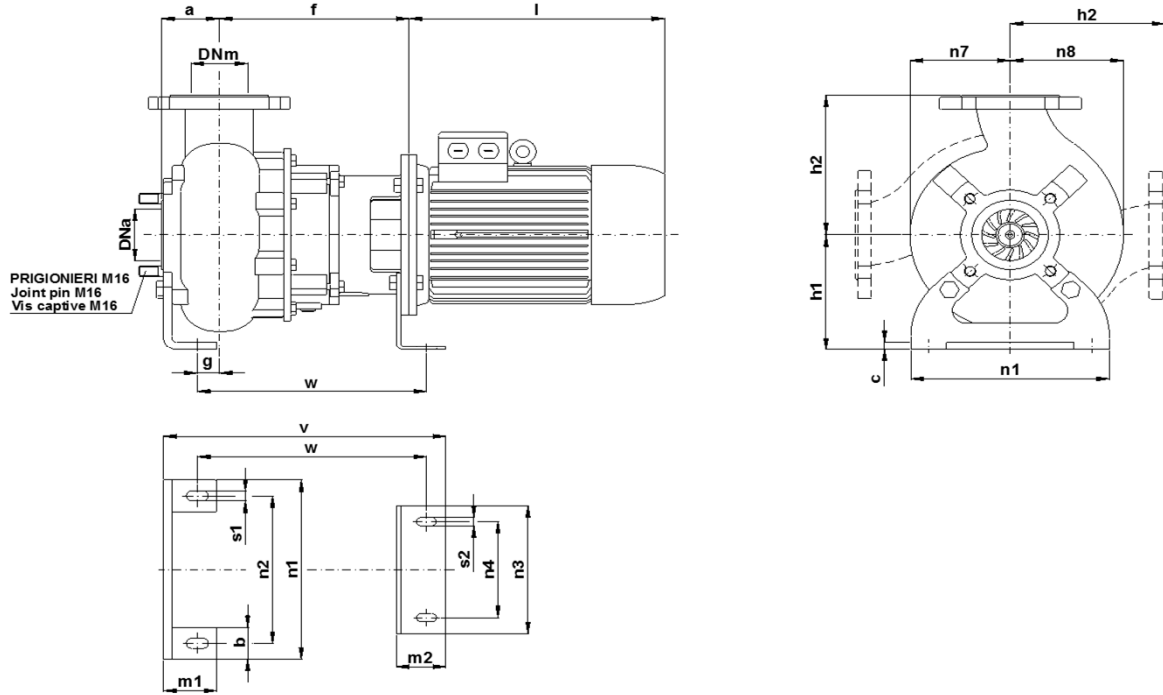
Motore - *Motor* - *Moteur* : B5 IP55

Classe isolamento - *Insulating class* - *Isolement classe* : F

Max. temperatura liquido - *Max. liquid temp.* - *Max. temperature du liquide* : 60°C

pH Liquido pompato - *pH pumped liquid* - *pH du liquide pompé* : 6 - 10

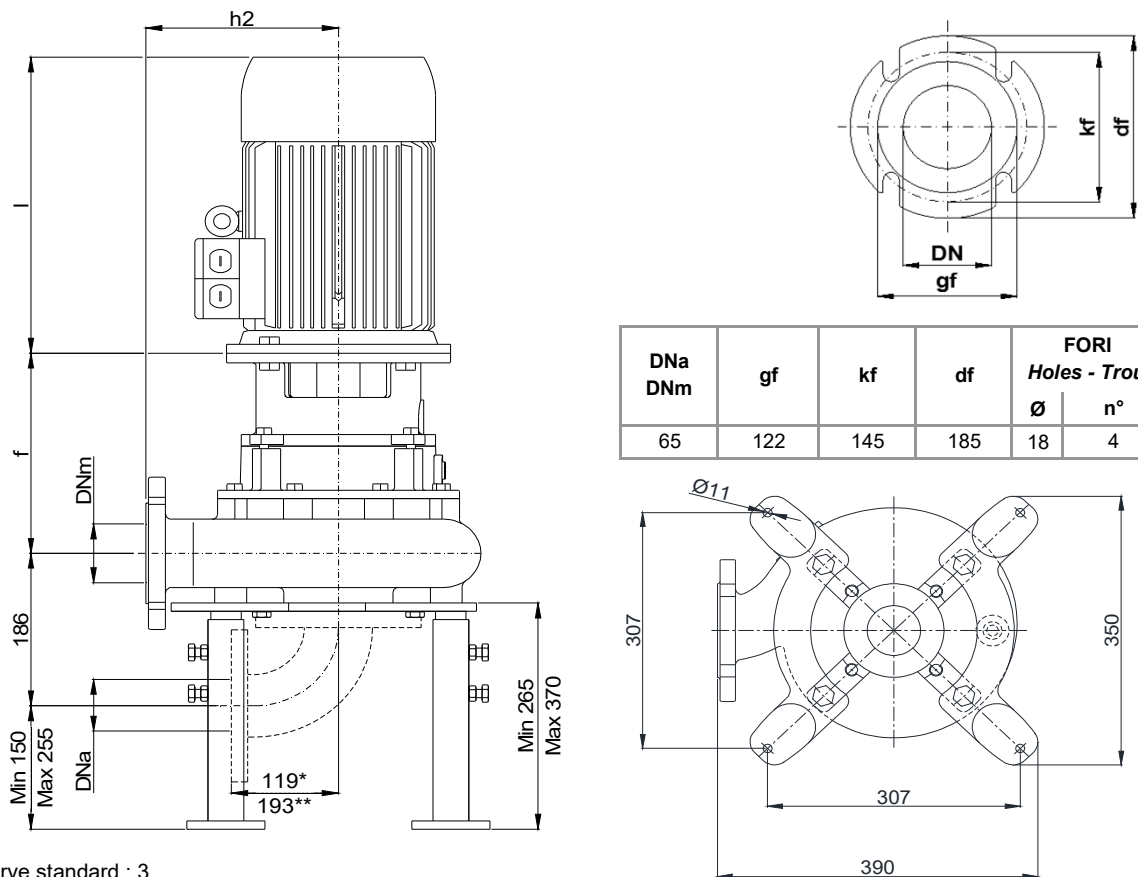
**INSTALLAZIONE ORIZZONTALE - *Horizontal installation - Installation Horizontale***



POMPA Pumps Pompe	DNa DNm	Gr. Motore Motor size Taille du moteur	a	b	c	f	g	h1	h2	l	m1	m2	n1	n2	n3	n4	n7	n8	s1	s2	v	w
KSM 65 - ....	65	132	70	50	12	297	26	180	215	435	75	100	300	250	280	180	140	160	16	18	452	360

Dimensioni - Size - Dimensions in mm.

**INSTALLAZIONE VERTICALE - *Vertical installation - Installation verticale***



DNa DNm	gf	kf	df	FORI Holes - Trou	
				Ø	n°
65	122	145	185	18	4

\* Curva dima - Curve standard : 3

\*\* Curva dima - Curve standard: 5

KSM 65/2-220-1-17X.0

Con riserva di variazioni tecniche e costruttive senza preavviso.

With reserve of technical and constructive variations without warning. - Avec réserve de variations techniques et constructives sans préavis.

**POMPE ROTOMEK srl** - 20063 CERNUSCO SUL NAVIGLIO (MI) - ITALY - Via Ponchielli, 1

Tel.02 9211.0205 - 02 9233.0399 Fax 02 9211.0630 Sito Internet: www.pomperotomec.it E-mail: sales@pomperotomec.it



# POMPE ROTOMECC

## KSM 65/2-220.4

### DN 65

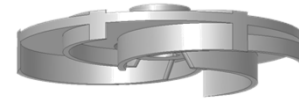
### 2900 rpm

Elettropompe con motore flangiato per liquidi carichi in camera asciutta  
 Dry installed sewage waters electric pumps with flanged motor  
 Electropompes pour eaux chargees en fosse seche

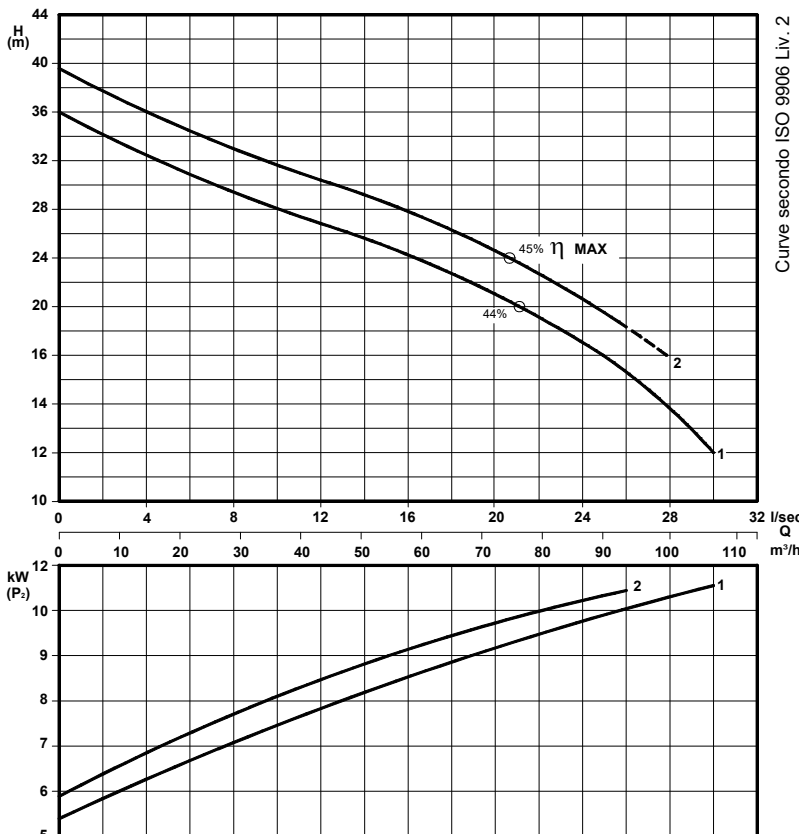


CURVA - Curve - Courbe		POMPA Pump Pompe		DN	GIRI/Min - RPM - Tours/min.	POTENZA MOTORE Motor rating Puissance moteur	PESO Weight Poids
N°						kW	Kg
1	KSM 65/2-175 A5 L3	65	2900	11	145		
2	KSM 65/2-185 A5 L3						

GIRANTE ARRETRATA A VORTICE  
 Vortex impeller  
 Roue Vortex



PASSAGGIO LIBERO  
 Free passage  
 Section de passage  
 45 mm



P2 - Potenza resa - Shaft power - Puissance sur arbre

#### COSTRUZIONE - Materials - Matériaux

Fusioni principali - Principal parts - Parts principal	Ghisa - Cast iron - Fonte - GG 25
Girante - Impeller - Roue	Ghisa - Cast iron - Fonte - GG 25
Albero - Shaft - Arbre	AISI 420
Viteria - Screws - Vis	AISI 304

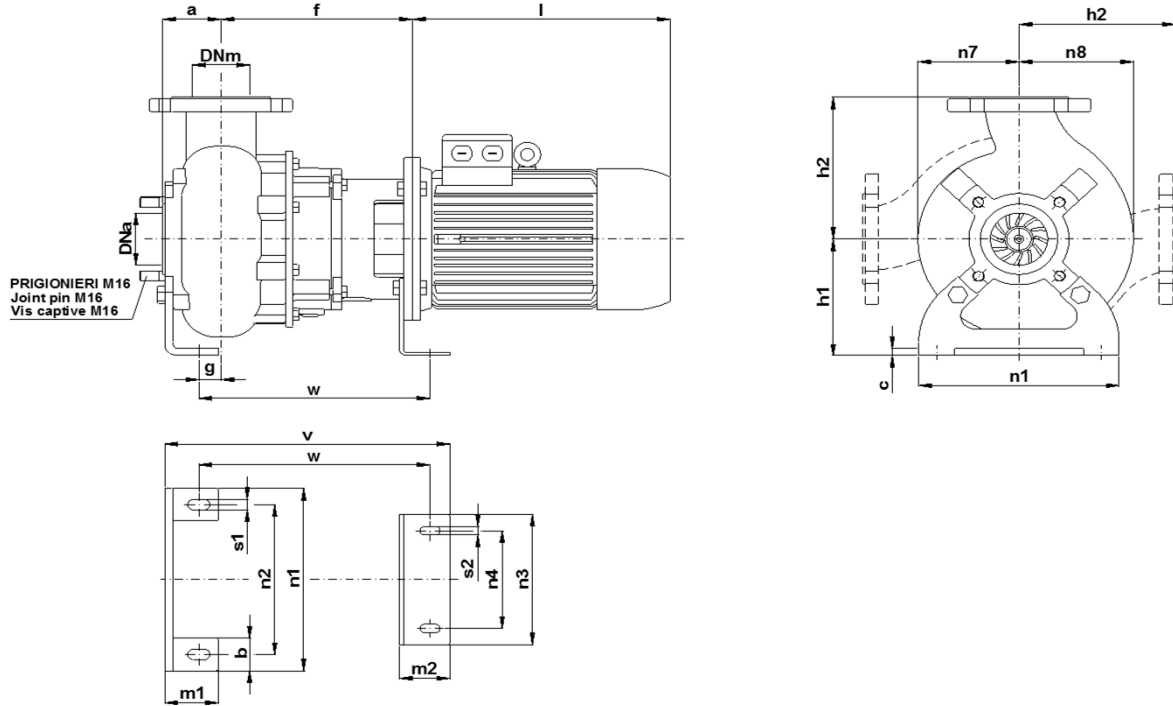
#### TENUTE MECCANICHE - Mechanical seals - Garniture mécanique

Doppia tenuta meccanica in bagno d'olio - Double mechanical seals in oil bath - Double garniture mécanique en chambre d'huile  
 Tenuta lato motore / tenuta lato liquido : carburo di silicio  
 Motor side / liquid side mechanical seal : silicon carbide  
 Garniture mécanique côté du moteur / côté liquide : carbure de silicium

#### CARATTERISTICHE TECNICHE - Technical Features - Caractéristiques Techniques

Motore - Motor - Moteur : B5 IP55  
 Classe isolamento - Insulating class - Isolement classe : F  
 Max. temperatura liquido - Max liquid temp. - Max Temperature du liquide: 60°C  
 pH Liquido pompato - pH pumped liquid - pH du liquide pompé: 6 - 10

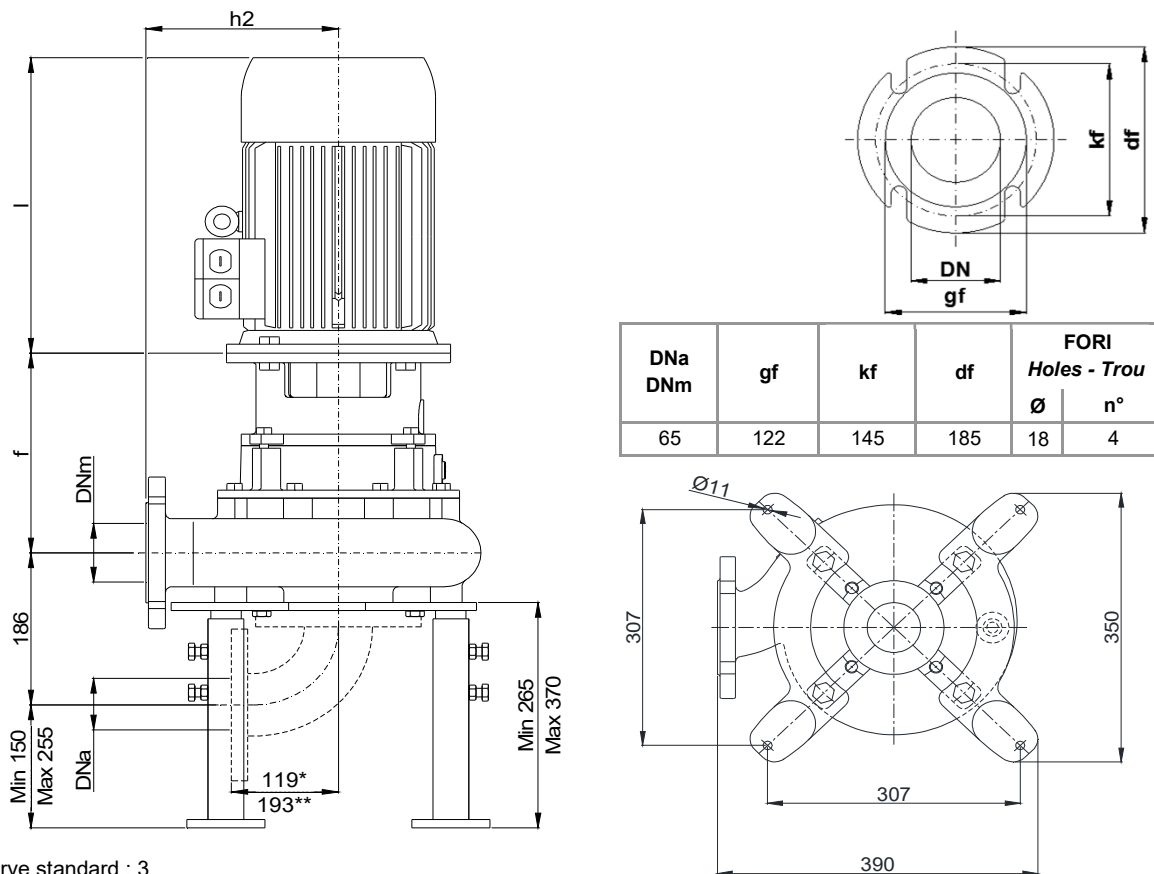
INSTALLAZIONE ORIZZONTALE - *Horizontal installation - Installation Horizontale*



POMPA Pumps Pompe	DNa DNm	Gr. Motore Motor size Taille du moteur	a	b	c	f	g	h1	h2	l	m1	m2	n1	n2	n3	n4	n7	n8	s1	s2	v	w
KSM 65 - ....	65	132	70	50	12	297	26	180	215	435	75	100	300	250	280	180	140	160	16	18	452	360

Dimensioni - Size - Dimensions in mm.

INSTALLAZIONE VERTICALE - *Vertical installation - Installation verticale*



DNa DNm	gf	kf	df	FORI Holes - Trou	
				Ø	n°
65	122	145	185	18	4

\* Curva dima - Curve standard : 3

\*\* Curva dima - Curve standard: 5

KSM 65/2-220-4-17X.0

Con riserva di variazioni tecniche e costruttive senza preavviso.

With reserve of technical and constructive variations without warning. - Avec réserve de variations techniques et constructives sans préavis.

**POMPE ROTOMECH srl** - 20063 CERNUSCO SUL NAVIGLIO (MI) - ITALY - Via Ponchielli, 1

Tel.02 9211.0205 - 02 9233.0399 Fax 02 9211.0630 Sito Internet: www.pomperotomec.it E-mail: sales@pomperotomec.it