



POMPE ROTOMECC

Elettropompe centrifughe ad asse orizzontale con girante arretrata a vortice
Centrifugal horizontal pumps with vortex impeller
Pompes à axe horizontal avec roue vortex

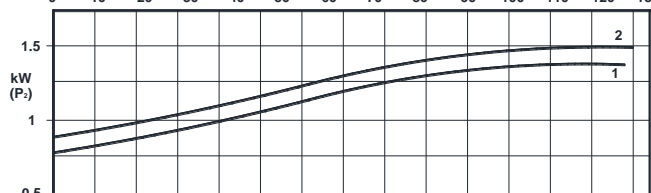
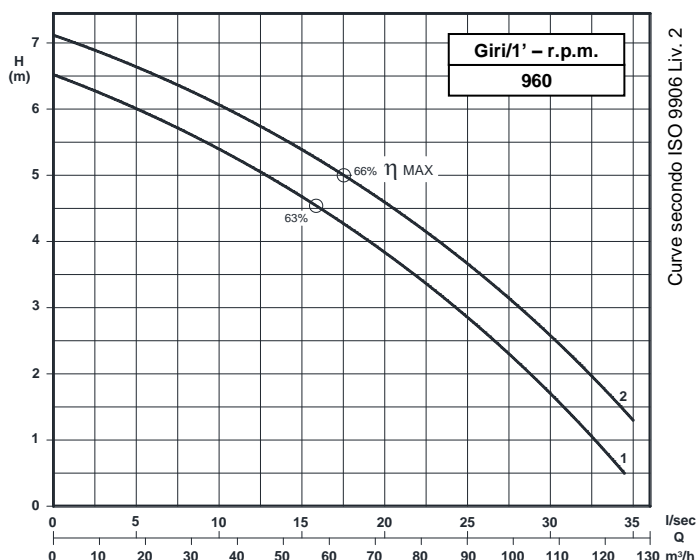
KS 100/6-220.1

DN 100

Giri/1' - r.p.m.
960



UNI EN ISO 9001 - 2015



Grandezza - Size - Group 100/220

Curva Curve Courbe N°	Pompa Pump Pompe	DN	Potenza motore Motor power Puissance du moteur P2 (Kw)	Giri/1' r.p.m.	Passaggio libero Free passage Section de passage
1	KS 100/6-219F2 A1 S1	100	1,5	960	85
2	KS 100/6-219F3 A1 S1				

P2 - Potenza resa - Shaft power - Puissance sur arbre



COSTRUZIONE - Materials - Matériaux

Fusioni principali - Principal parts - Parts principal	Ghisa - Cast iron - Fonte - GG 25
Girante - Impeller - Roue	Ghisa - Cast iron - Fonte - GG 25
Albero - Shaft - Arbre	AISI 420
Viteria - Screws - Vis	AISI 304

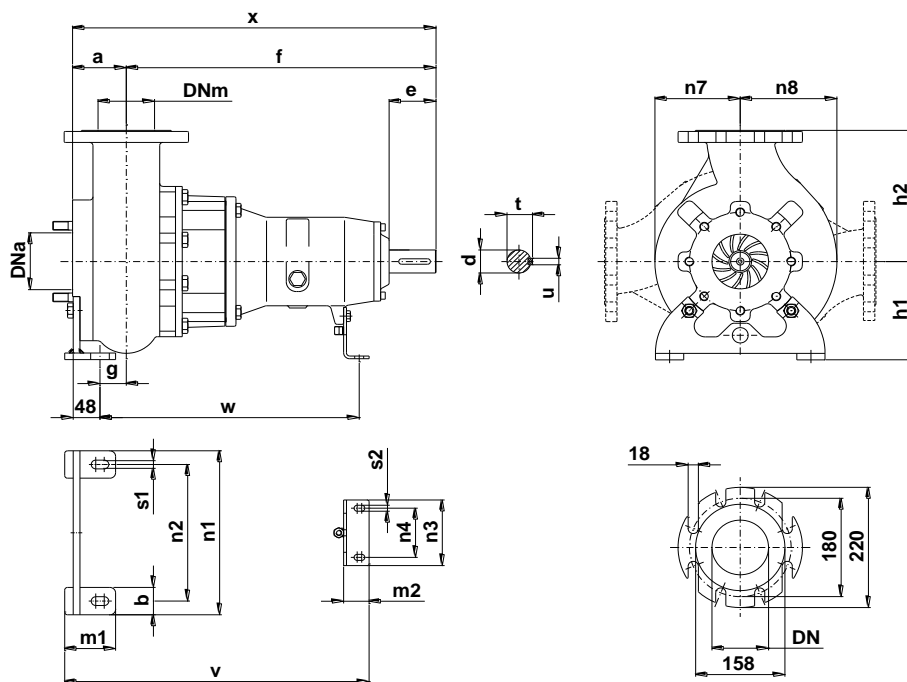
TENUTE MECCANICHE - Mechanical seals - Garniture mécanique

Doppia tenuta meccanica in bagno d'olio - Double mechanical seals in oil bath - Double garniture mécanique en chambre d'huile
Tenuta lato motore / tenuta lato liquido : carburo di silicio Motor side / liquid side mechanical seal : silicon carbide Garniture mécanique côté du moteur / côté liquide : carbure de silicium

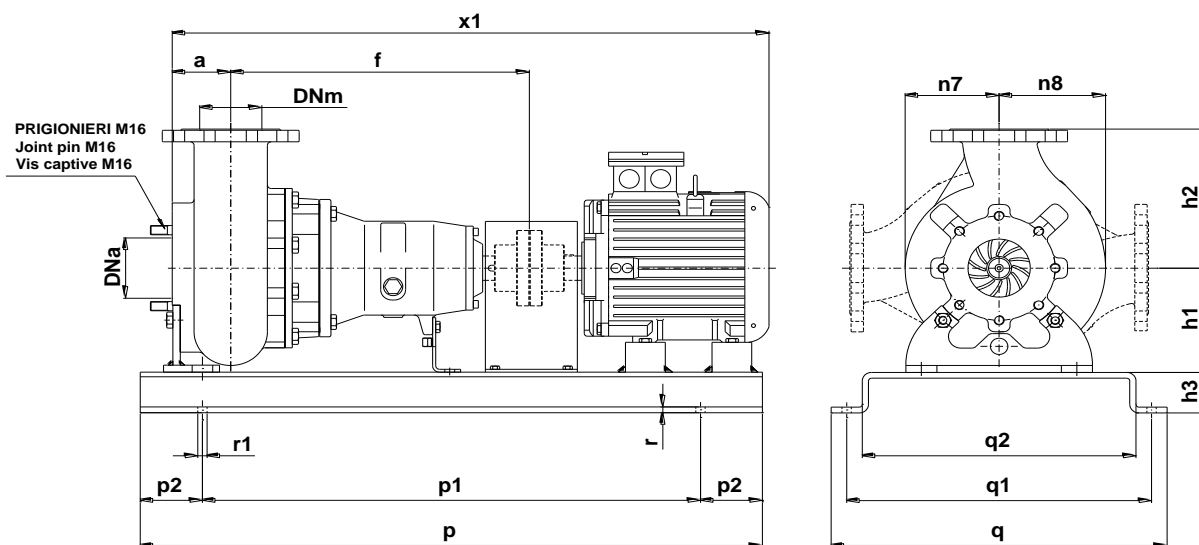
CARATTERISTICHE TECNICHE - Technical Features - Caractéristiques Techniques

Max. temperatura liquido - Max. liquid temp. - Max. temperature du liquide : 60°C
pH Liquido pompato - pH pumped liquid - pH du liquide pompé : 6 - 10

DIMENSIONI DI INGOMBRO - Dimensions



Pompa Pump Pompe	DNa DNm	a	b	c	d	e	f	g	h1	h2	m1	m2	n1	n2	n3	n4	n7	n8	s1	s2	t	u	v	w	x	Peso Weight Poids
KS 100 / .. A1S1	100	95	50	12	32	80	548	47	180	240	90	45	300	250	120	90	155	175	16	11	35	10	466	459	643	75



Pompa Pump Pompe	kW	Giri/1' r.p.m.	Motore Motor - Moteur MEC	h3	p	p1	p2	q	q1	q2	r	r1	x1	Peso Weight Poids
KS 100/6-219F2 A1 S1	1,5	960	100	70	1000	800	100	540	490	440	10	16	959	141
KS 100/6-219F3 A1 S1														

KS 100/6-220.1.17

Con riserva di variazioni tecniche e costruttive senza preavviso.
With reserve of technical and constructive variations without warning. – Avec réserve de variations techniques et constructives sans préavis.

POMPE ROTOMECC srl - 20063 CERNUSCO SUL NAVIGLIO (MI) - ITALY - Via Ponchielli,1

☎ 02 92110205 - 02 92330399 📠 02 92110630 🌐 Sito Internet: www.pomperotomec.it ✉ E-mail: sales@pomperotomec.it



POMPE ROTOMEC

Elettropompe centrifuga ad asse orizzontale con girante arretrata a vortice
Centrifugal horizontal pumps with vortex impeller
Pompes à axe horizontal avec roue vortex

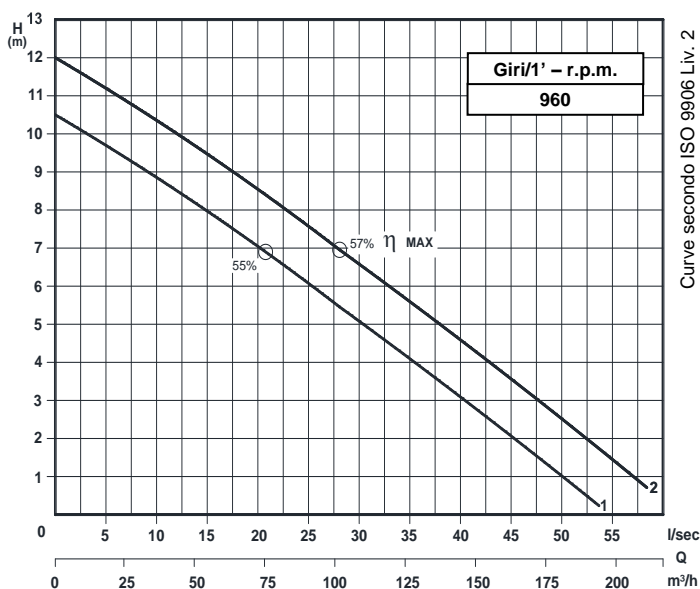
KS 100/6-280.1

DN 100

Giri/1' - r.p.m.
960



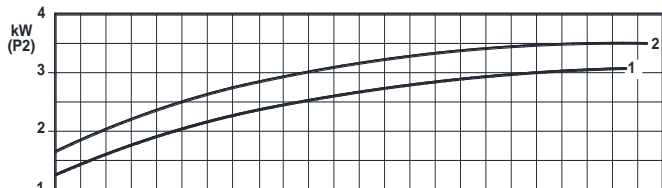
UNI EN ISO 9001 - 2015



Grandezza - Size - Group 100/280

Curva Curve Courbe N°	Pompa Pump Pompe	DN	Potenza motore Motor power Puissance du moteur P2 (Kw)	Giri/1' r.p.m.	Passaggio libero Free passage Section de passage
1	KS 100/6-270F4 A3 S2	100	4	960	85
2	KS 100/6-279F4 A3 S2				

P2 - Potenza resa - Shaft power - Puissance sur arbre



COSTRUZIONE - Materials - Matériaux

Fusioni principali - Principal parts - Parts principal	Ghisa - Cast iron - Fonte - GG 25
Girante - Impeller - Roue	Ghisa - Cast iron - Fonte - GS500
Albero - Shaft - Arbre	AISI 420
Viteria - Screws - Vis	AISI 304

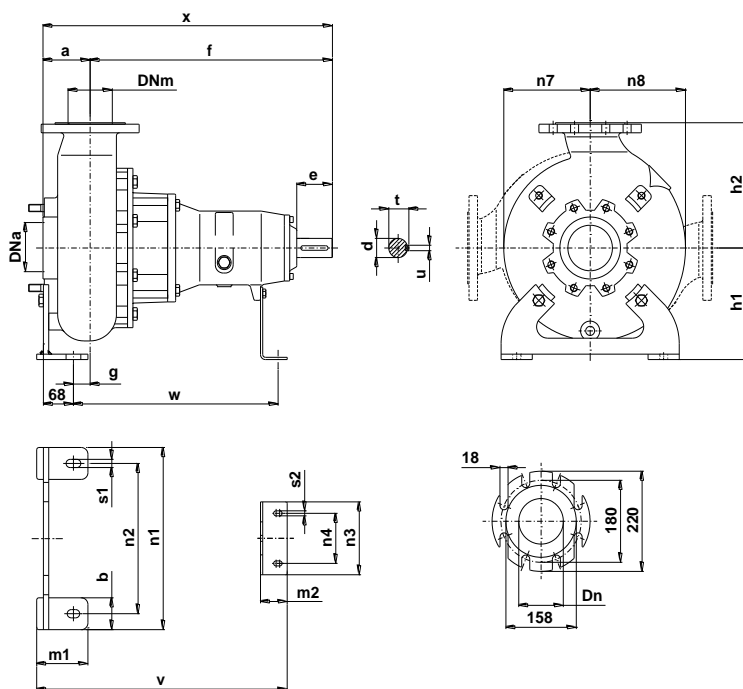
TENUTE MECCANICHE - Mechanical seals - Garniture mécanique

Doppia tenuta meccanica in bagno d'olio - Double mechanical seals in oil bath - Double garniture mécanique en chambre d'huile
Tenuta lato motore / tenuta lato liquido : carburo di silicio Motor side / liquid side mechanical seal : silicon carbide Garniture mécanique côté du moteur / côté liquide : carbure de silicium

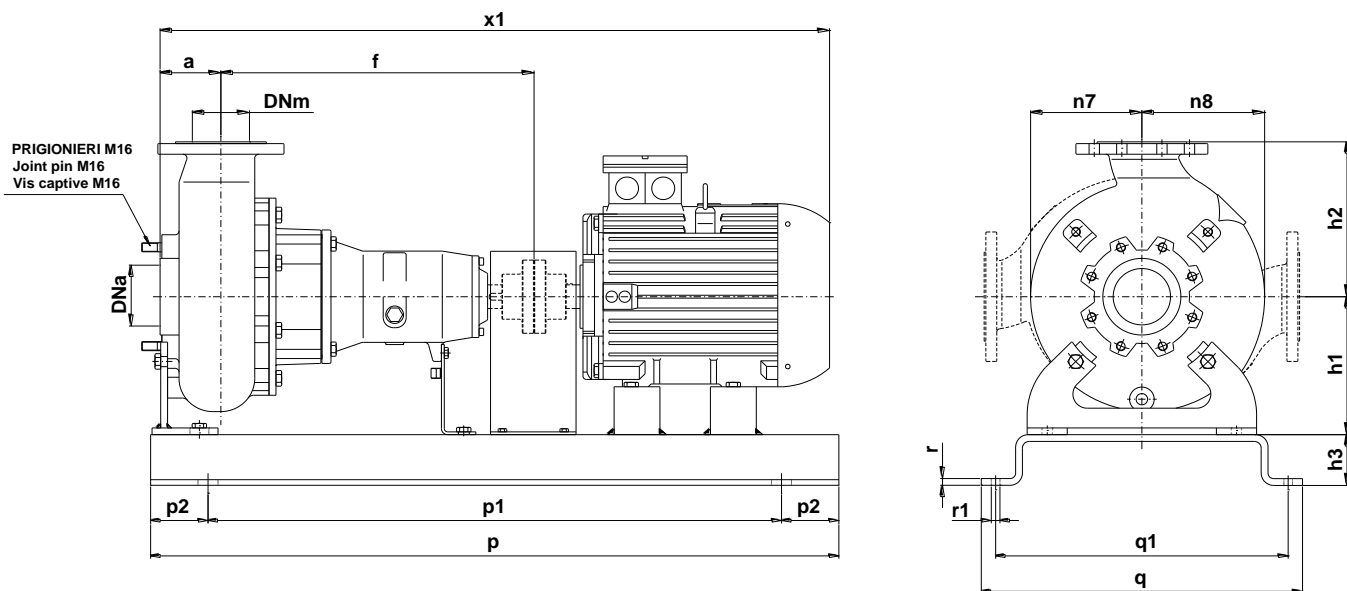
CARATTERISTICHE TECNICHE - Technical Features - Caractéristiques Techniques

Max. temperatura liquido - Max. liquid temp. - Max. temperature du liquide : 60°C
pH Liquido pompato - pH pumped liquid - pH du liquide pompé : 6 - 10

DIMENSIONI DI INGOMBRO - Dimensions



Pompa Pump Pompe	DNa DNm	a	b	d	e	f	g	h1	h2	m1	m2	n1	n2	n3	n4	n7	n8	s1	s2	t	u	v	w	x	Peso Weight Poids
KS 100 / .. A3S2	100	105	70	42	80	545	38	245	275	115	60	400	330	160	110	195	215	18	11	45	12	565	460	650	100



Pompa Pump Pompe	kW	Giri/1' r.p.m.	Motore Motor - Moteur MEC	h3	p	p1	p2	q	q1	q2	r	r1	x1	Peso Weight Poids
KS 100/6-274F4 A3 S2	4	960	132	90	1200	1000	100	560	510	440	12	18	1165	268
KS 100/6-279F4 A3 S2														

KS 100/6-280.1.17

Con riserva di variazioni tecniche e costruttive senza preavviso.
With reserve of technical and constructive variations without warning. - Avec réserve de variations techniques et constructives sans préavis.

POMPE ROTOMECC srl - 20063 CERNUSCO SUL NAVIGLIO (MI) - ITALY - Via Ponchielli,1

☎ 02 92110205 - 02 92330399 📠 02 92110630 🌐 Sito Internet: www.pomperotomec.it ✉ E-mail: sales@pomperotomec.it



POMPE ROTOMECC

Elettropompe centrifuge ad asse orizzontale con girante arretrata a vortice
Centrifugal horizontal pumps with vortex impeller
Pompes à axe horizontal avec roue vortex

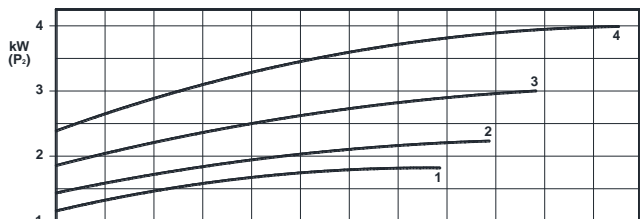
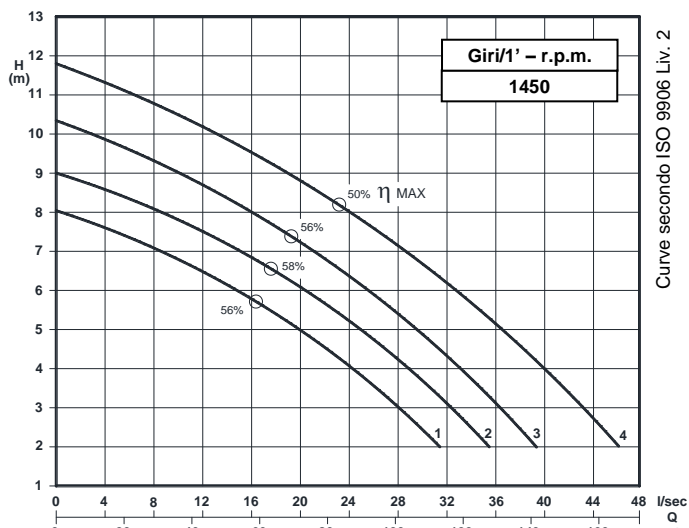
KS 100/4-220.1

DN 100

Giri/1' - r.p.m.
1450



UNI EN ISO 9001 - 2015



Grandezza - Size - Group 100/220

Curva Curve Courbe N°	Pompa Pump Pompe	DN	Potenza motore Motor power Puissance du moteur P2 (Kw)	Giri/1' r.p.m.	Passaggio libero Free passage Section de passage
1	KS 100-178F2 A1 S1	100	2,2	1450	90
2	KS 100-184F2 A1 S1				
3	KS 100-204F2 A1 S1		3		
4	KS 100-214F2 A1 S1		4		

P2 - Potenza resa - Shaft power - Puissance sur arbre

COSTRUZIONE - Materials - Matériaux

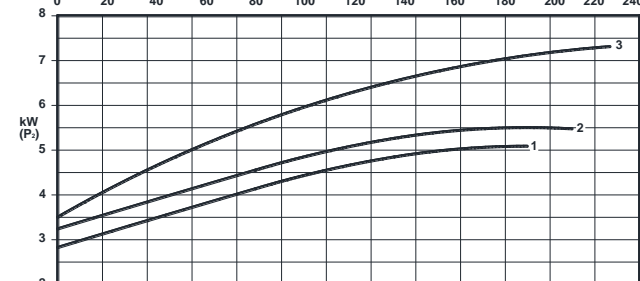
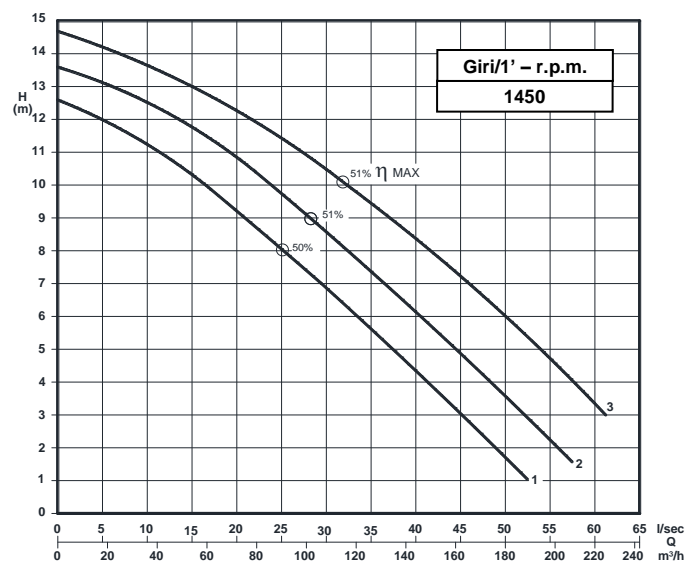
Fusioni principali - Principal parts - Parts principal	Ghisa - Cast iron - Fonte - GG 25
Girante - Impeller - Roue	Ghisa - Cast iron - Fonte - GG 25
Albero - Shaft - Arbre	AISI 420
Viteria - Screws - Vis	AISI 304

TENUTE MECCANICHE - Mechanical seals - Garniture mécanique

Doppia tenuta meccanica in bagno d'olio - Double mechanical seals in oil bath - Double garniture mécanique en chambre d'huile
 Tenuta lato motore / tenuta lato liquido : carburo di silicio
 Motor side / liquid side mechanical seal : silicon carbide
 Garniture mécanique côté du moteur / côté liquide : carbure de silicium

CARATTERISTICHE TECNICHE - Technical Features - Caractéristiques Techniques

Max. temperatura liquido - Max liquid temp. - Max. température du liquide : 60°C
 pH Liquido pompato - pH pumped liquid - pH du liquide pompé : 6 - 10

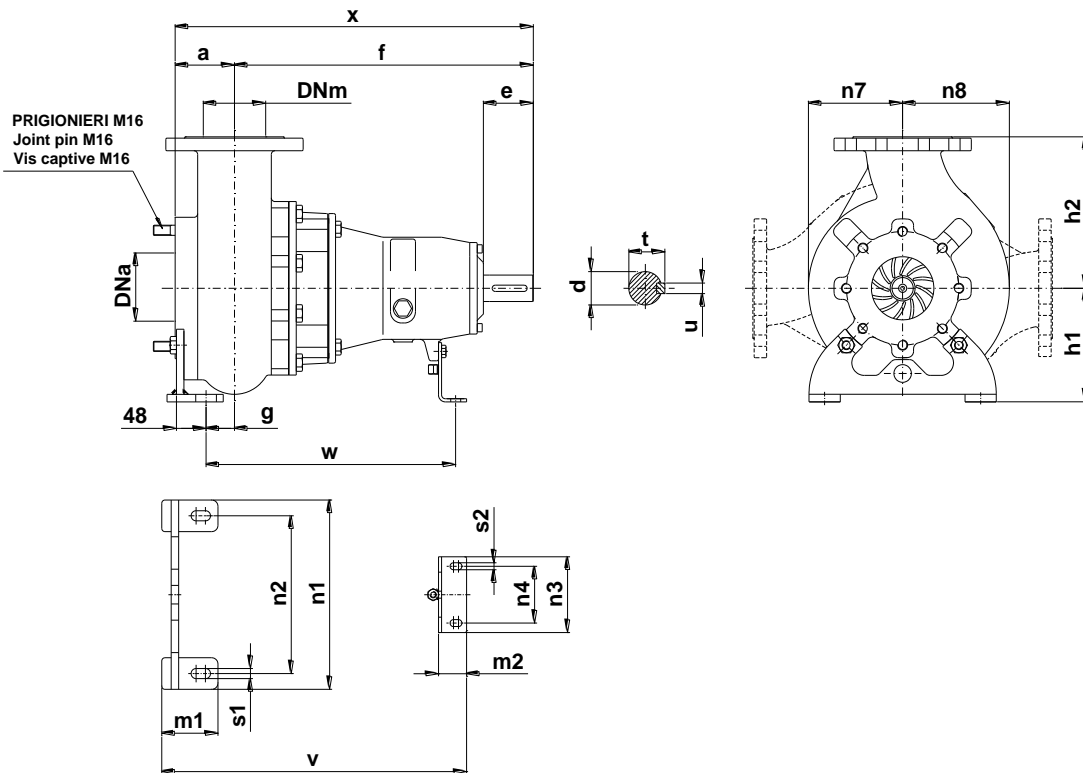


Grandezza - Size - Group 100/220

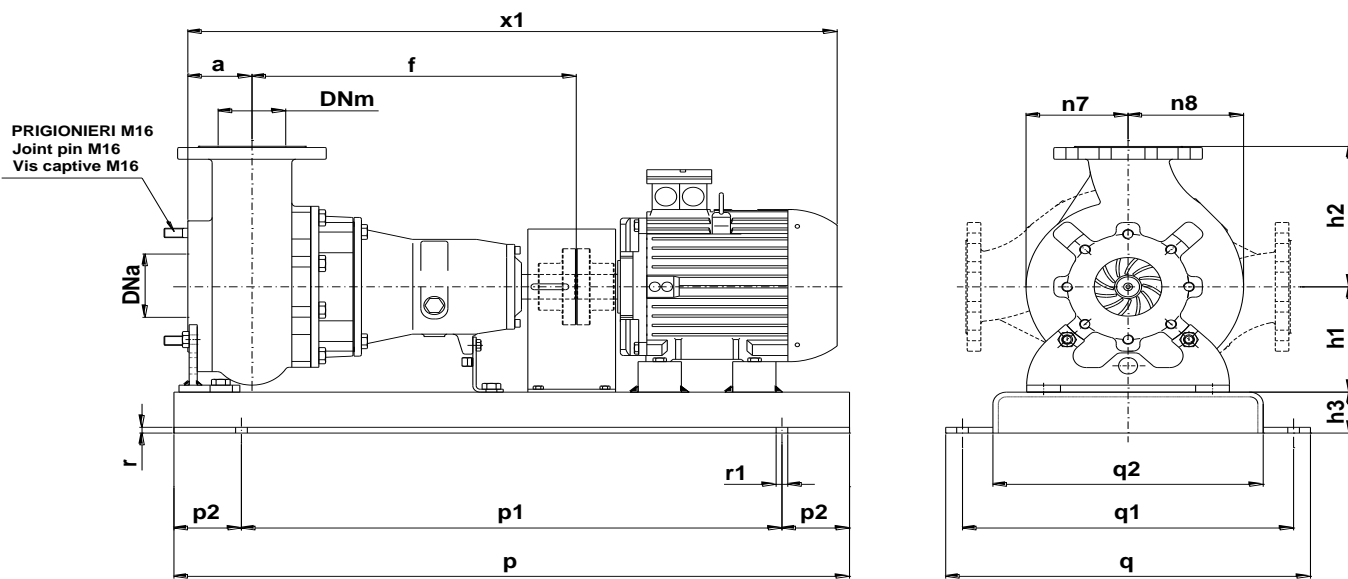
Curva Curve Courbe N°	Pompa Pump Pompe	DN	Potenza motore Motor power Puissance du moteur P2 (Kw)	Giri/1' r.p.m.	Passaggio libero Free passage Section de passage
1	KS 100-212F3 A2 S1	100	5,5	1450	85
2	KS 100-219F3 A2 S1				
3	KS 100-205F A3 S2	100	7,5	1450	90

P2 - Potenza resa - Shaft power - Puissance sur arbre

DIMENSIONI DI INGOMBRO – Dimensions



Pompa Pump Pompe	DNa DNm	a	b	c	d	e	f	g	h1	h2	m1	m2	n1	n2	n3	n4	n7	n8	s1	s2	t	u	v	w	x	Peso Weight Poids
KS 100 / .. A1S1 KS 100 / .. A2S1	100	95	50	12	32	80	480	46	180	240	90	45	300	250	120	90	155	175	16	11	35	10	488	400	574	75
KS 100 / .. A3 S2	100	95	50	12	42	80	550	46	180	240	90	45	300	250	120	90	155	175	16	11	45	12	547	458	635	90



Pompa Pump Pompe	kW	Giri/1' r.p.m.	Motore Motor - Moteur MEC	h3	p	p1	p2	q	q1	q2	r	r1	x1	Peso Weight Poids
KS 100-178F2 A1 S1	2,2	1450	100	70	1000	800	100	540	490	400	10	16	965	141
KS 100-184F2 A1 S1														143
KS 100-204F2 A1 S1	3		985	153										
KS 100-214F2 A1 S1	4													
KS 100-212F3 A2 S1	5,5	1450	132	90	1200	1000	100	560	510	440	12	18	1095	226
KS 100-219F3 A2 S1														
KS 100-205F A3 S2	7,5	1450	132	90	1200	1000	100	560	510	440	12	18	1095	250

KS 100/4-220.1.17W

Con riserva di variazioni tecniche e costruttive senza preavviso.
With reserve of technical and constructive variations without warning. – Avec réserve de variations techniques et constructives sans préavis.

POMPE ROTOMECC srl - 20063 CERNUSCO SUL NAVIGLIO (MI) - ITALY - Via Ponchielli,1

☎ 02 92110205 - 02 92330399 📠 02 92110630 🌐 Sito Internet: www.pomperotomec.it ✉ E-mail: sales@pomperotomec.it



POMPE ROTOMECC

Elettropompe centrifuga ad asse orizzontale con girante arretrata a vortice
Centrifugal horizontal pumps with vortex impeller
Pompes à axe horizontal avec roue vortex

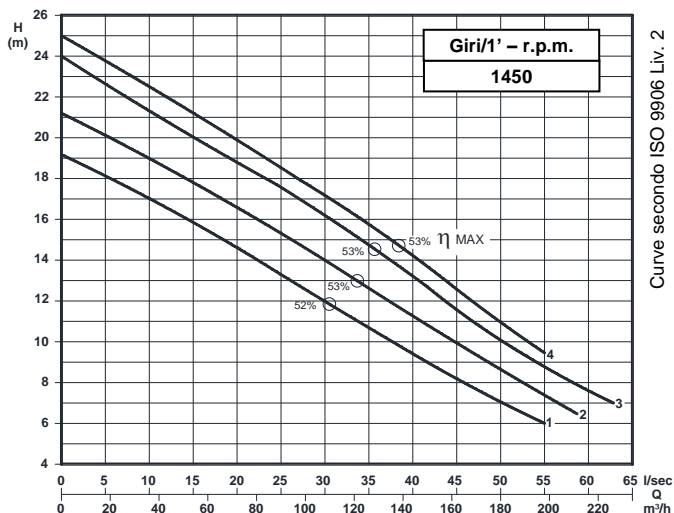
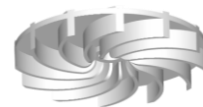
KS 100/4-280.1

DN 100

Giri/1' - r.p.m.
1450



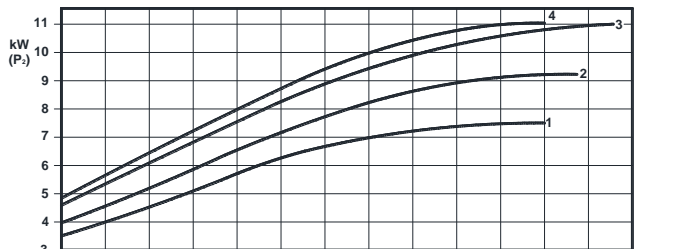
UNI EN ISO 9001 - 2015



Grandezza - Size - Group 100/280

Curva Curve Courbe N°	Pompa Pump Pompe	DN	Potenza motore Motor power Puissance du moteur P2 (Kw)	Giri/1' r.p.m.	Passaggio libero Free passage Section de passage
1	KS 100-232F4 A3 S2	100	7,5	1450	85
2	KS 100-245F4 A3 S2		11		
3	KS 100-260F4 A3 S2				
4	KS 100-265F4 A3 S2				

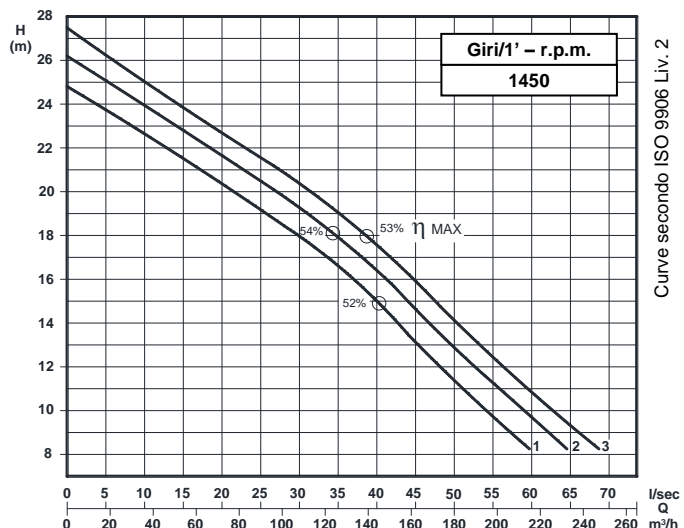
P2 - Potenza resa - Shaft power - Puissance sur arbre



COSTRUZIONE - Materials - Matériaux	
Fusioni principali - Principal parts - Parts principal	Ghisa - Cast iron - Fonte - GG 25
Girante - Impeller - Roue	Ghisa - Cast iron - Fonte - GS 500
Albero - Shaft - Arbre	AISI 420
Viteria - Screws - Vis	AISI 304

TENUTE MECCANICHE - Mechanical seals - Garniture mécanique
Doppia tenuta meccanica in bagno d'olio - Double mechanical seals in oil bath - Double garniture mécanique en chambre d'huile
Tenuta lato motore / tenuta lato liquido : carburo di silicio Motor side / liquid side mechanical seal : silicon carbide Garniture mécanique côté du moteur / côté liquide : carbure de silicium

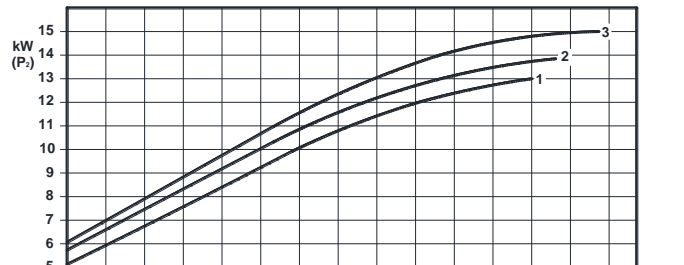
CARATTERISTICHE TECNICHE - Technical Features - Caractéristiques Techniques
Max. temperatura liquido - Max liquid temp. - Max. temperature du liquide : 60°C
pH Liquido pompato - pH pumped liquid - pH du liquide pompé : 6 - 10



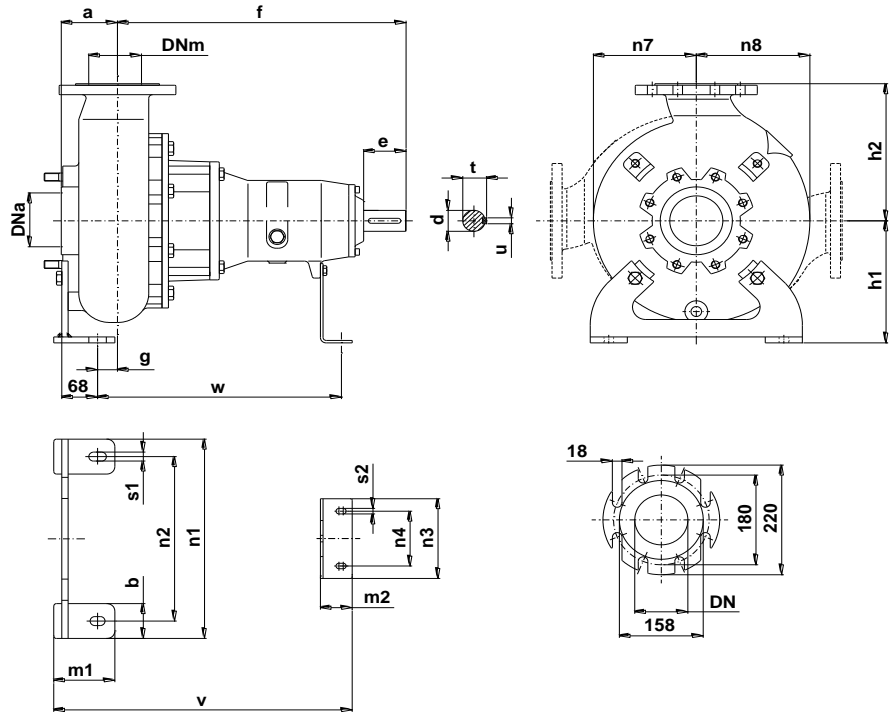
Grandezza - Size - Group 100/280

Curva Curve Courbe N°	Pompa Pump Pompe	DN	Potenza motore Motor power Puissance du moteur P2 (Kw)	Giri/1' r.p.m.	Passaggio libero Free passage Section de passage
1	KS 100-270F4 A3 S2	100	15	1450	85
2	KS 100-274F4 A3 S2				
3	KS 100-279F4 A3 S2				

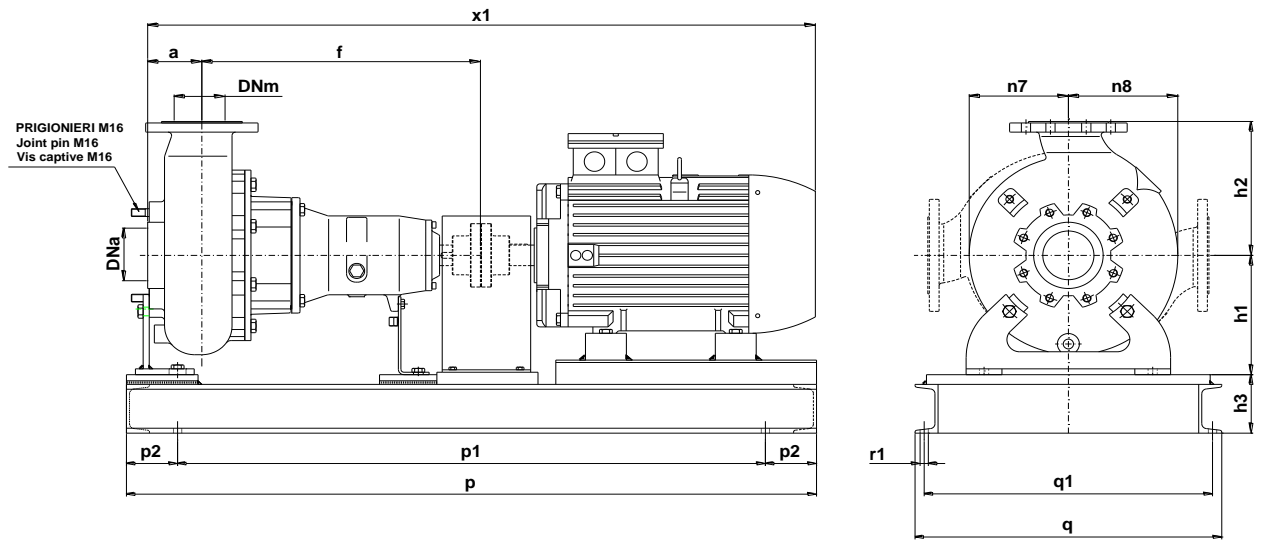
P2 - Potenza resa - Shaft power - Puissance sur arbre



DIMENSIONI DI INGOMBRO - Dimensions



Pompa Pump Pompe	DNa DNm	a	b	c	d	e	f	g	h1	h2	m1	m2	n1	n2	n3	n4	n7	n8	s1	s2	t	u	v	w	x	Peso Weight Poids
KS 100 / .. A3S2	100	105	70	12	42	80	545	48	245	275	110	60	400	330	160	110	195	215	18	11	45	12	563	460	650	100



Pompa Pump Pompe	kW	Giri/1' r.p.m.	Motore Motor - Moteur MEC	h3	p	p1	p2	q	q1	r1	x1	Peso Weight Poids
KS 100-232F4 A3 S2	7,5	1450	132	90	1200	1000		560	510	16	1165	268
KS 100-245F4 A3 S2	11										1260	325
KS 100-260F4 A3 S2												
KS 100-265F4 A3 S2	15		160	120	1350	1150	100	600	564	18	1305	345
KS 100-270F4 A3 S2												
KS 100-274F4 A3 S2												
KS 100-279F4 A3 S2												

KS 100/4-280.1.17

Con riserva di variazioni tecniche e costruttive senza preavviso.
With reserve of technical and constructive variations without warning. – Avec réserve de variations techniques et constructives sans préavis.

POMPE ROTOMECC srl - 20063 CERNUSCO SUL NAVIGLIO (MI) - ITALY - Via Ponchielli,1

☎ 02 92110205 - 02 92330399 📠 02 92110630 🌐 Sito Internet: www.pomperotomec.it ✉ E-mail: sales@pomperotomec.it



POMPE ROTOMECC

Elettropompe centrifughe ad asse orizzontale con girante arretrata a vortice
Centrifugal horizontal pumps with vortex impeller
Pompes à axe horizontal avec roue vortex

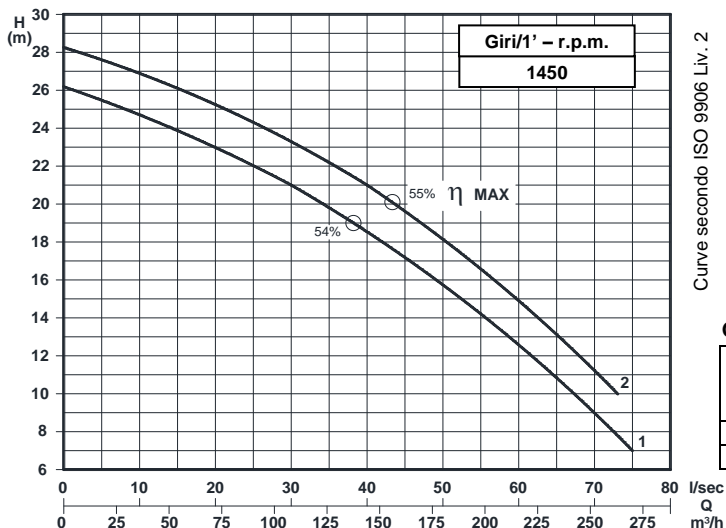
KS 100/4-280.2

DN 100

Giri/1' - r.p.m.
1450



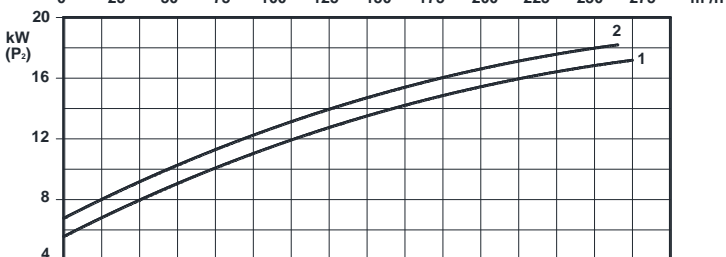
UNI EN ISO 9001 - 2015



Grandezza - Size - Group 100/280

Curva Curve Courbe N°	Pompa Pump Pompe	DN	Potenza motore Motor power Puissance du moteur P2 (Kw)	Giri/1' r.p.m.	Passaggio libero Free passage Section de passage
1	KS 100-265E A3 S2	100	18,5	1450	90
2	KS 100-279E A3 S2				

P2 - Potenza resa - Shaft power - Puissance sur arbre



COSTRUZIONE - Materials - Matériaux

Fusioni principali - Principal parts - Parts principal	Ghisa - Cast iron - Fonte - GG 25
Girante - Impeller - Roue	Ghisa - Cast iron - Fonte GG 25 (E1) - GS500 (H1)
Albero - Shaft - Arbre	AISI 420
Viteria - Screws - Vis	AISI 304

TENUTE MECCANICHE - Mechanical seals - Garniture mécanique

Doppia tenuta meccanica in bagno d'olio - Double mechanical seals in oil bath - Double garniture mécanique en chambre d'huile

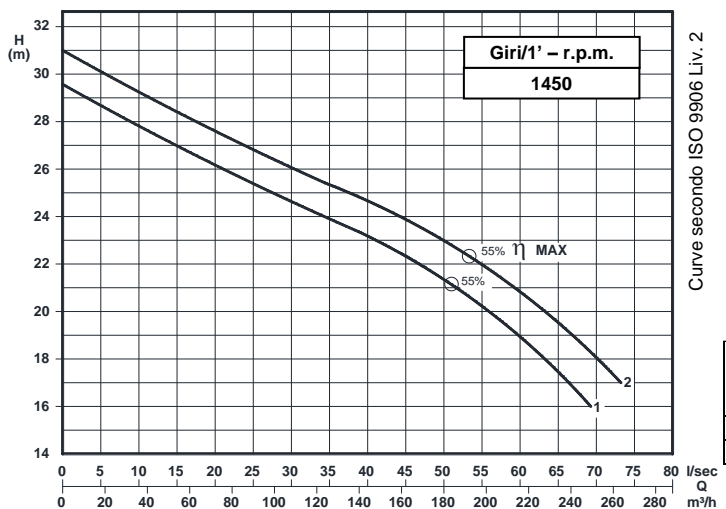
Tenuta lato motore / tenuta lato liquido : carburo di silicio
Motor side / liquid side mechanical seal : silicon carbide

Garniture mécanique côté du moteur / côté liquide : carbure de silicium

CARATTERISTICHE TECNICHE - Technical Features - Caractéristiques Techniques

Max. temperatura liquido - Max. liquid temp. - Max. temperature du liquide : 60°C

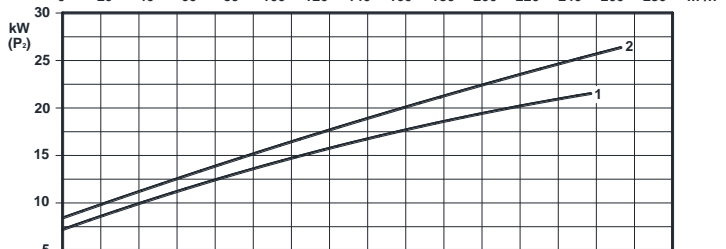
pH Liquido pompato - pH pumped liquid - pH du liquide pompé : 6 - 10



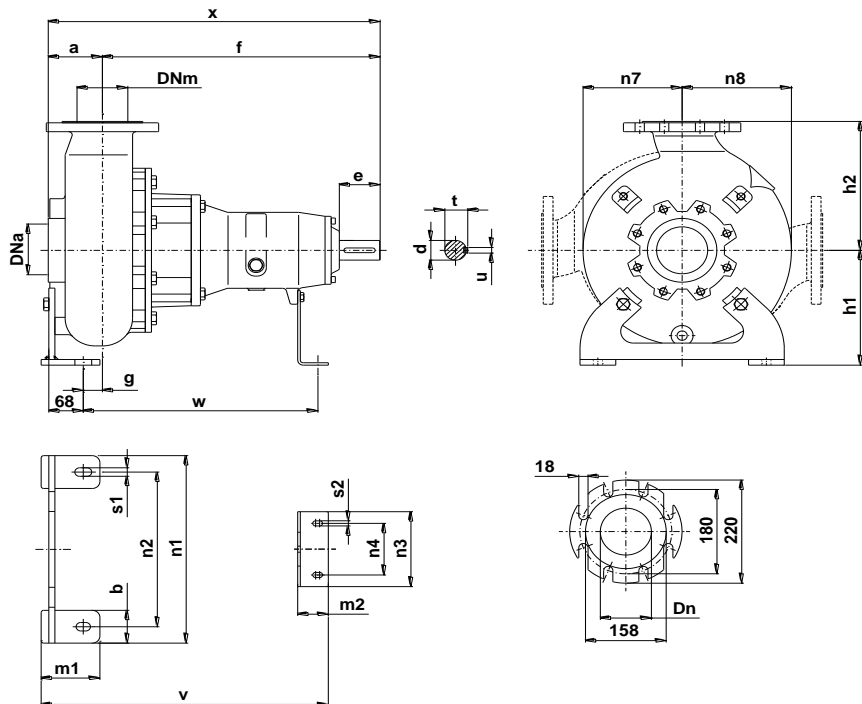
Grandezza - Size - Group 100/280

Curva Curve Courbe N°	Pompa Pump Pompe	DN	Potenza motore Motor power Puissance du moteur P2 (Kw)	Giri/1' r.p.m.	Passaggio libero Free passage Section de passage
1	KS 100-270H A3 S2	100	22	1450	90
2	KS 100-279H A3 S2		30		

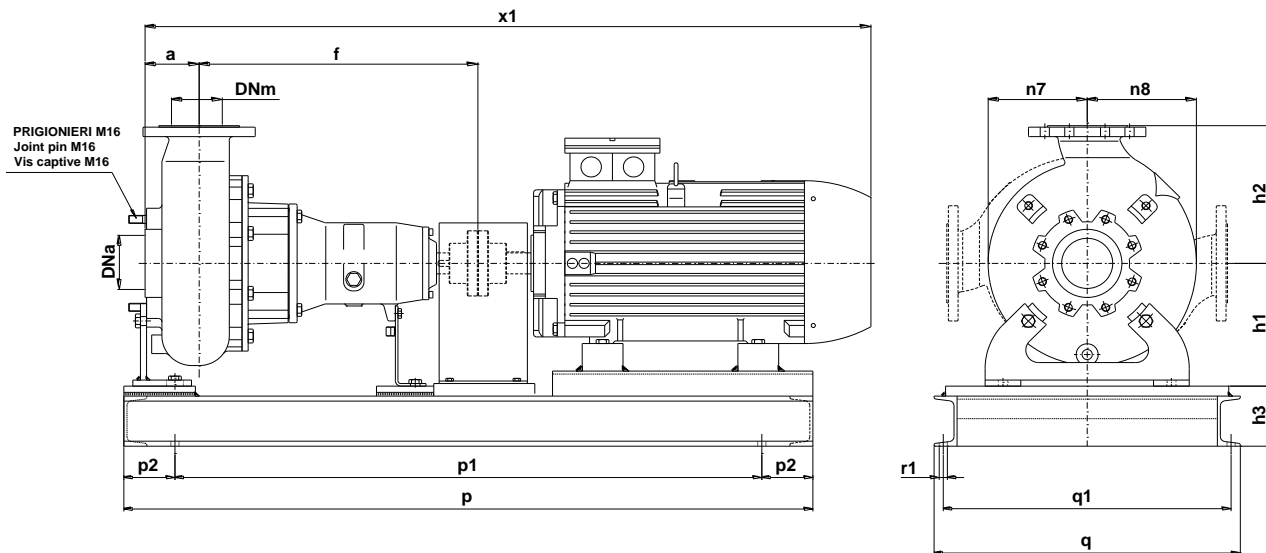
P2 - Potenza resa - Shaft power - Puissance sur arbre



DIMENSIONI DI INGOMBRO – Dimensions



Pompa Pump Pompe	DNa DNm	a	b	c	d	e	f	g	h1	h2	m1	m2	n1	n2	n3	n4	n7	n8	s1	s2	t	u	v	w	x	Peso Weight Poids
KS 100 / .. A3S2	100	105	70	12	42	80	545	38	245	275	115	60	400	330	160	110	195	215	18	11	45	12	563	460	650	100



Pompa Pump Pompe	kW	Giri/1' r.p.m.	Motore Motor - Moteur MEC	h3	p	p1	p2	q	q1	r1	x1	Peso Weight Poids
KS 100-265E A3 S2	18,5	1450	180	120	1350	1150	100	600	564	18	1335	382
KS 100-279E A3 S2											1370	400
KS 100-270H A3 S2	22		200								1420	475
KS 100-279H A3 S2	30											

KS 100/4-280.2.17

Con riserva di variazioni tecniche e costruttive senza preavviso.
With reserve of technical and constructive variations without warning. – Avec réserve de variations techniques et constructives sans préavis.

POMPE ROTOMECC srl - 20063 CERNUSCO SUL NAVIGLIO (MI) - ITALY - Via Ponchielli,1

☎ 02 92110205 - 02 92330399 📠 02 92110630 🌐 Sito Internet: www.pomperotomec.it ✉ E-mail: sales@pomperotomec.it



POMPE ROTOMECC

Elettropompe centrifughe ad asse orizzontale con girante arretrata a vortice
Centrifugal horizontal pumps with vortex impeller
Pompes à axe horizontal avec roue vortex

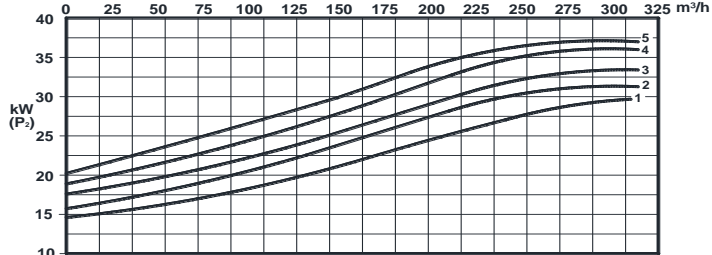
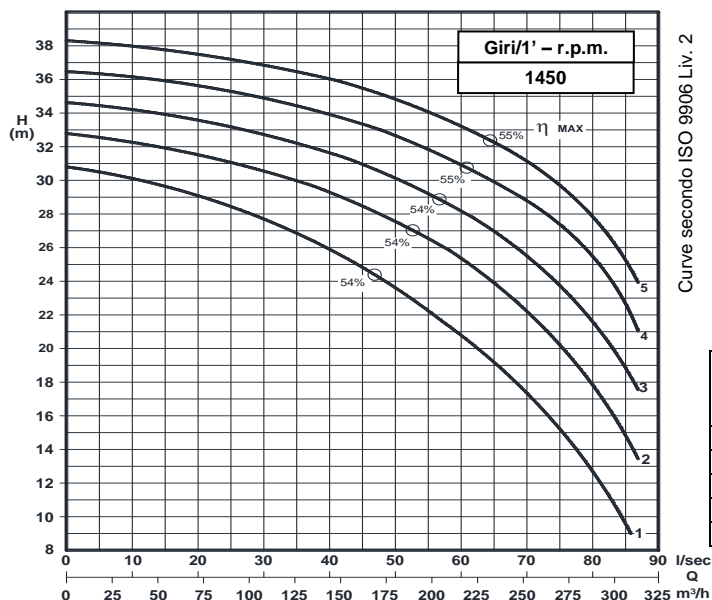
KS 100/4-375.1

DN 100

Giri/1' - r.p.m.
1450



UNI EN ISO 9001 - 2015



Grandezza - Size - Group 100/375

Curva Curve Courbe N°	Pompa Pump Pompe	DN	Potenza motore Motor power Puissance du moteur P2 (Kw)	Giri/1' r.p.m.	Passaggio libero Free passage Section de passage
1	KS 100-300K11 A4 S3	100	30	1450	85
2	KS 100-315K11 A4 S3				
3	KS 100-325K11 A4 S3				
4	KS 100-335K11 A4 S3				
5	KS 100-345K11 A4 S3				

P2 - Potenza resa - Shaft power - Puissance sur arbre

COSTRUZIONE - Materials - Matériaux

Fusioni principali - Principal parts - Parts principal	Ghisa - Cast iron - Fonte - GG 25
Girante - Impeller - Roue	Ghisa - Cast iron - Fonte - GG 25
Albero - Shaft - Arbre	AISI 420
Viteria - Screws - Vis	AISI 304

TENUTE MECCANICHE - Mechanical seals - Garniture mécanique

Doppia tenuta meccanica in bagno d'olio - Double mechanical seals in oil bath -
Double garniture mécanique en chambre d'huile

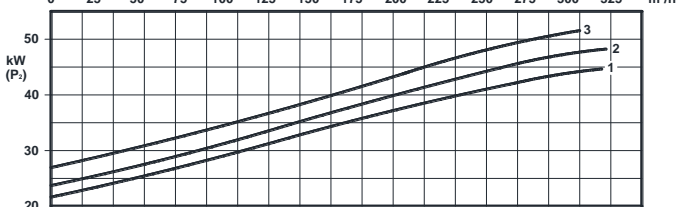
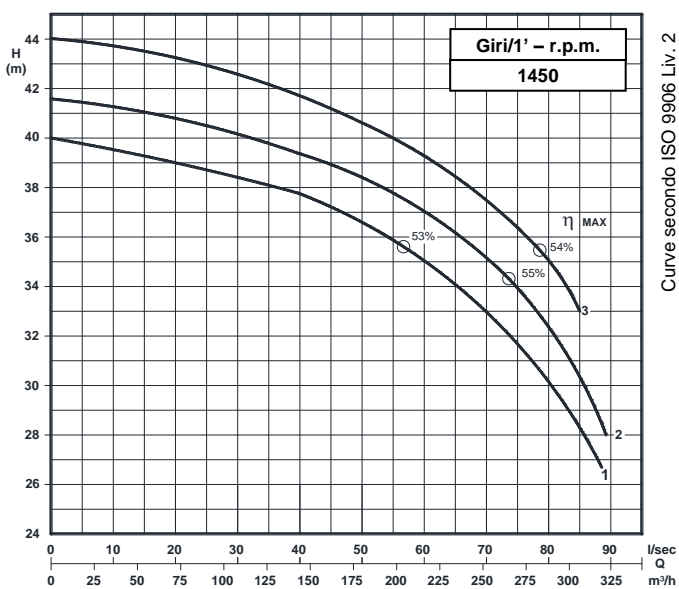
Tenuta lato motore / tenuta lato liquido : carburo di silicio
Motor side / liquid side mechanical seal : silicon carbide

Garniture mécanique côté du moteur / côté liquide : carbure de silicium

CARATTERISTICHE TECNICHE - Technical Features - Caractéristiques Techniques

Max. temperatura liquido - Max. liquid temp. - Max. temperature du liquide : 60°C

pH Liquido pompato - pH pumped liquid - pH du liquide pompé : 6 - 10

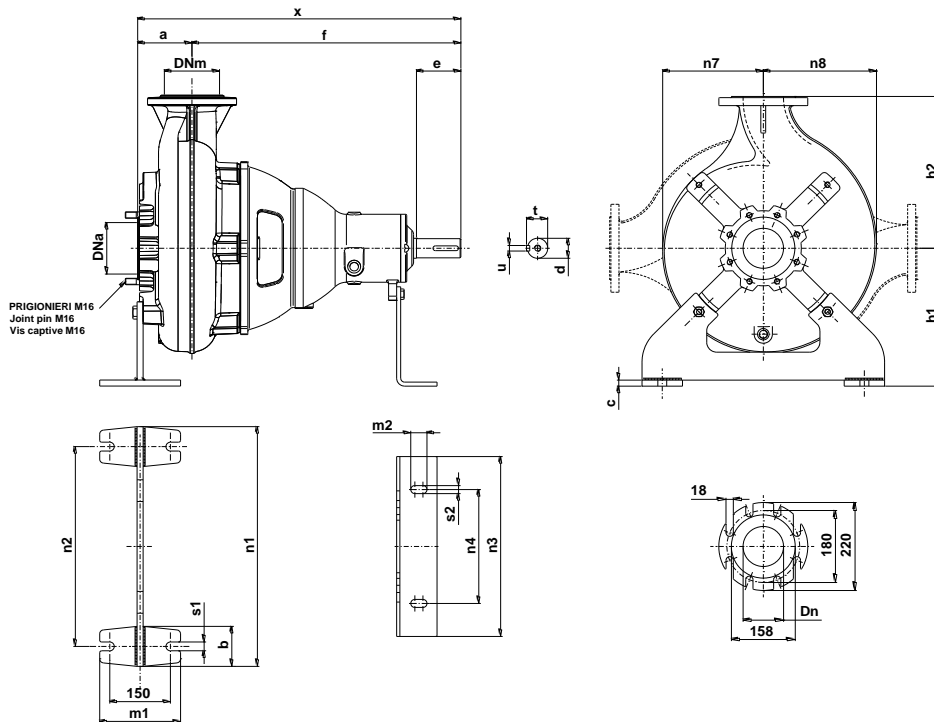


Grandezza - Size - Group 100/375

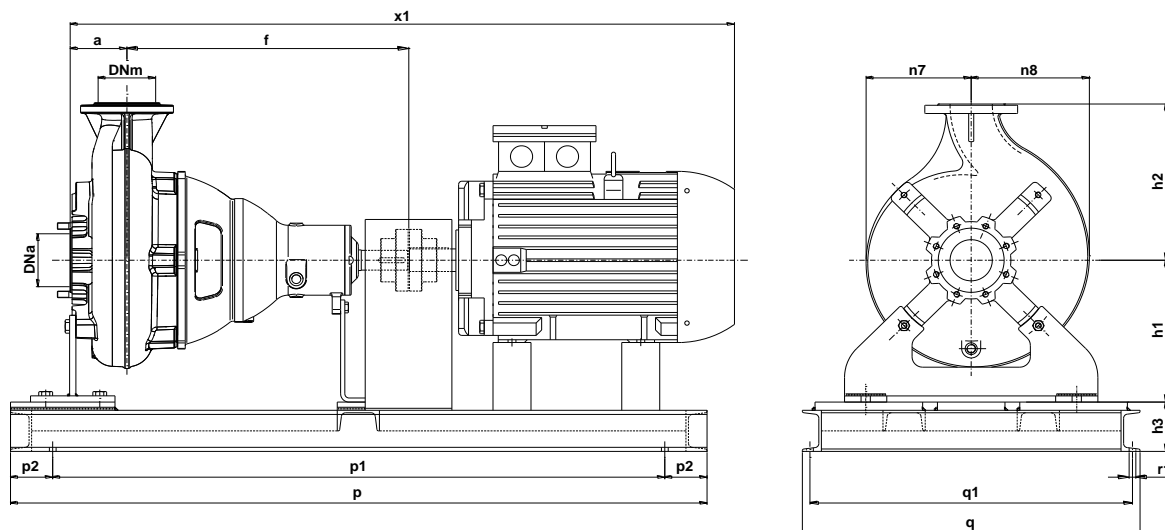
Curva Curve Courbe N°	Pompa Pump Pompe	DN	Potenza motore Motor power Puissance du moteur P2 (Kw)	Giri/1' r.p.m.	Passaggio libero Free passage Section de passage
1	KS 100-355K11 A4 S3	100	45	1450	85
2	KS 100-364K11 A4 S3		55		
3	KS 100-374K11 A4 S3				

P2 - Potenza resa - Shaft power - Puissance sur arbre

DIMENSIONI DI INGOMBRO – Dimensions



Pompa Pump Pompe	DNa DNm	a	b	c	d	e	f	g	h1	h2	m1	m2	n1	n2	n3	n4	n7	n8	s1	s2	t	u	v	w	x	Peso Weight Poids
KS 100 / .. A4S3	100	135	100	12	42	110	665	53	345	400	200	100	400	330	150	110	210	240	22	20	53	14	860	641	827	203



Pompa Pump Pompe	kW	Giri/1' r.p.m.	Motore Motor - Moteur MEC	h3	p	p1	p2	q	q1	x1	Peso Weight Poids																			
KS 100-300K11 A4 S3	30	1450	200	110	1650	1450	100	800	765	1573	540																			
KS 100-315K11 A4 S3	37		225							1650	1450	100	800	765	1625	595														
KS 100-325K11 A4 S3															45	225	1650	1450	100	800	765	1650	628							
KS 100-335K11 A4 S3																						55	250	1650	1450	100	800	765	1735	745
KS 100-345K11 A4 S3																														
KS 100-355K11 A4 S3																														
KS 100-365K11 A4 S3																														
KS 100-374K11 A4 S3																														

KS 100-375.1.17

Con riserva di variazioni tecniche e costruttive senza preavviso.

With reserve of technical and constructive variations without warning. – Avec réserve de variations techniques et constructives sans préavis.

POMPE ROTOMECC srl - 20063 CERNUSCO SUL NAVIGLIO (MI) - ITALY - Via Ponchielli,1

☎ 02 92110205 - 02 92330399 📠 02 92110630 🌐 Sito Internet: www.pomperotomec.it ✉ E-mail: sales@pomperotomec.it



POMPE ROTOMECC

Elettropompe centrifuge ad asse orizzontale con girante arretrata a vortice
Centrifugal horizontal pumps with vortex impeller
Pompes à axe horizontal avec roue vortex

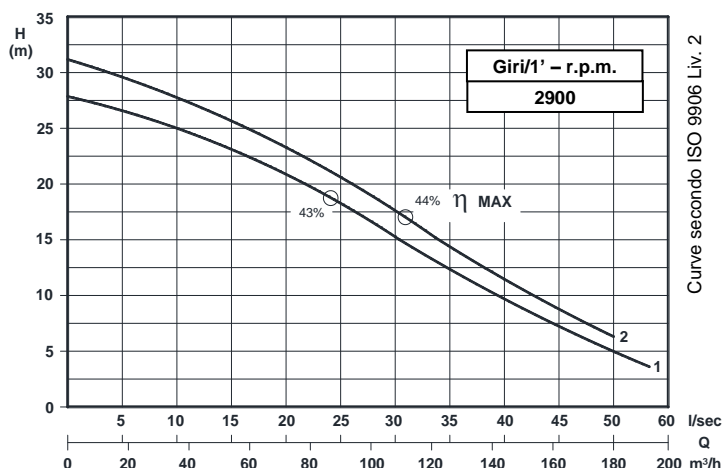
KS 100/2-220.1

DN 100

Giri/1' - r.p.m.
2900



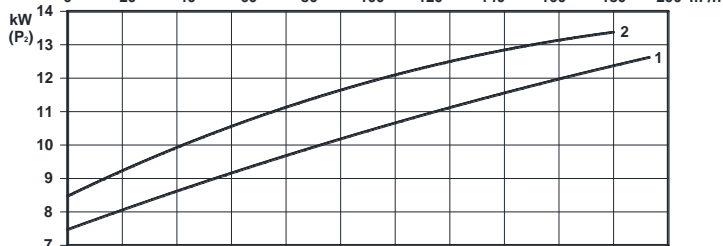
UNI EN ISO 9001 - 2015



Grandezza - Size - Group 100/220

Curva Curve Courbe N°	Pompa Pump Pompe	DN	Potenza motore Motor power Puissance du moteur P2 (Kw)	Giri/1' r.p.m.	Passaggio libero Free passage Section de passage
1	KS 100/2-180 A3 S2	100	15	2900	75
2	KS 100/2-190 A3 S2				

P2 - Potenza resa - Shaft power - Puissance sur arbre



COSTRUZIONE - Materials - Matériaux

Fusioni principali - Principal parts - Parts principal	Ghisa - Cast iron - Fonte - GG 25
Girante - Impeller - Roue	Ghisa - Cast iron - Fonte - GG 25
Albero - Shaft - Arbre	AISI 420
Viteria - Screws - Vis	AISI 304

TENUTE MECCANICHE - Mechanical seals - Garniture mécanique

Doppia tenuta meccanica in bagno d'olio - Double mechanical seals in oil bath - Double garniture mécanique en chambre d'huile

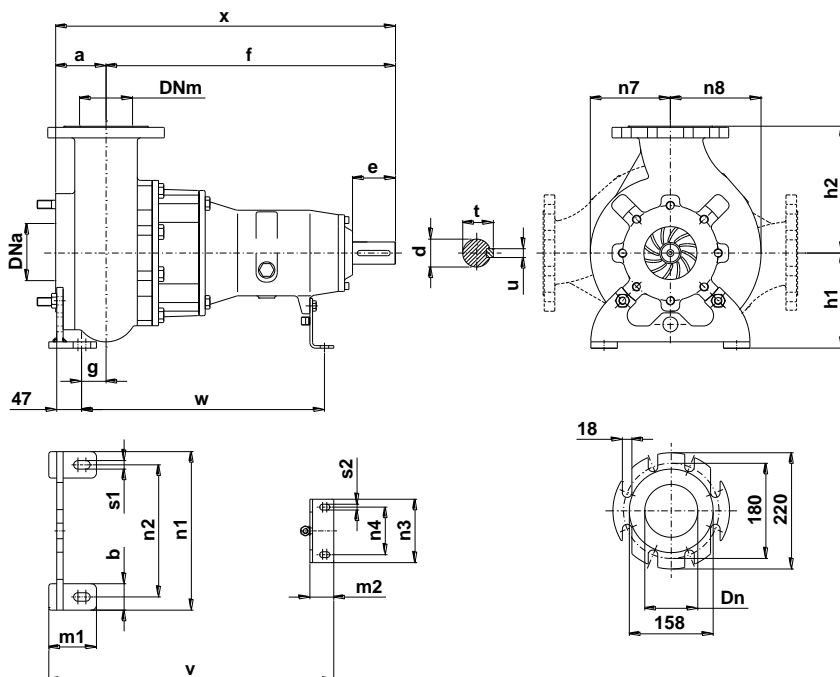
Tenuta lato motore / tenuta lato liquido : carburo di silicio
Motor side / liquid side mechanical seal : silicon carbide
Garniture mécanique côté du moteur / côté liquide : carbure de silicium

CARATTERISTICHE TECNICHE - Technical Features - Caractéristiques Techniques

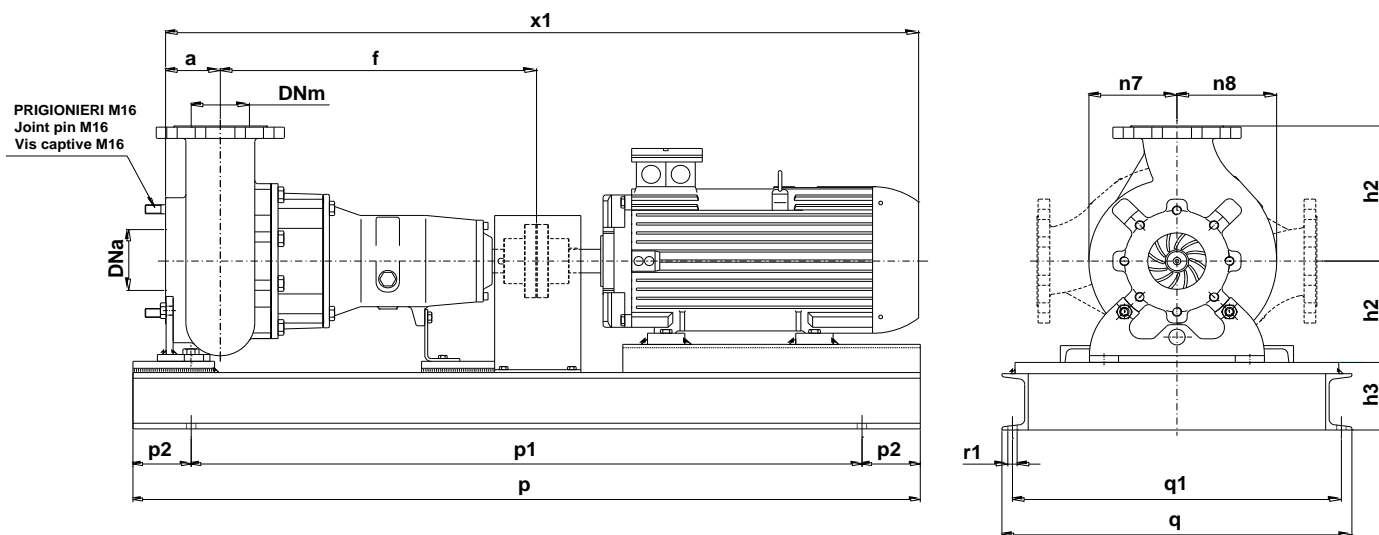
Max. temperatura liquido - Max. liquid temp. - Max. temperature du liquide : 60°C

pH Liquido pompato - pH pumped liquid - pH du liquide pompé : 6 - 10

DIMENSIONI DI INGOMBRO – Dimensions



Pompa Pump Pompe	DNa DNm	a	b	c	d	e	f	g	h1	h2	m1	m2	n1	n2	n3	n4	n7	n8	s1	s2	t	u	v	w	x	Peso Weight Poids
KS 100 / .. A3S2	100	95	50	12	42	80	550	46	180	240	90	45	300	250	120	90	155	175	16	11	45	12	547	458	635	90



Pompa Pump Pompe	kW	Giri/1' r.p.m.	Motore Motor - Moteur MEC	h3	p	p1	p2	q	q1	r1	x1	Peso Weight Poids
KS 100/2-180 A3 S2	15	2900	160	90	1350	1150	100	600	564	18	1291	300
KS 100/2-190 A3 S2												

KS 100/2-220.1.17W

Con riserva di variazioni tecniche e costruttive senza preavviso.
With reserve of technical and constructive variations without warning. – Avec réserve de variations techniques et constructives sans préavis.

POMPE ROTOMECC srl - 20063 CERNUSCO SUL NAVIGLIO (MI) - ITALY - Via Ponchielli,1

☎ 02 92110205 - 02 92330399 📠 02 92110630 **Sito Internet:** www.pomperotomec.it **E-mail:** sales@pomperotomec.it